



The call



37-y female
presenting with multiorgan failure
17 days after sleeve gastrectomy

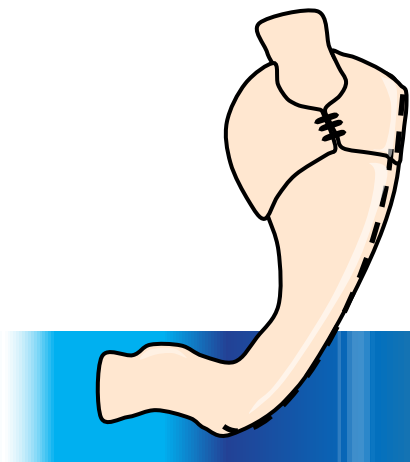
- Obesity / body mass index 38 kg/m²
- Multiple sclerosis (immunotherapy)
- Severe gastroesophageal reflux



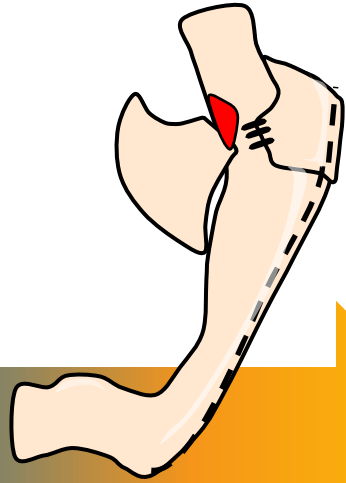
Patient history



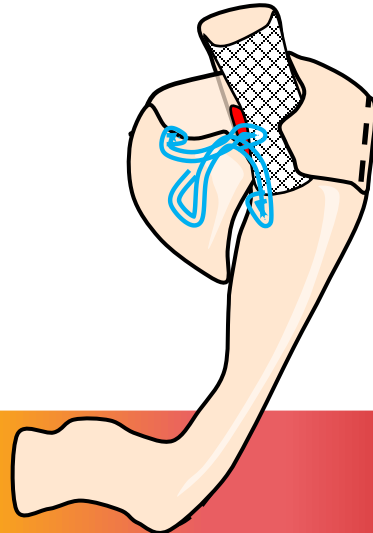
D-0 N-Sleeve
gastrectomy



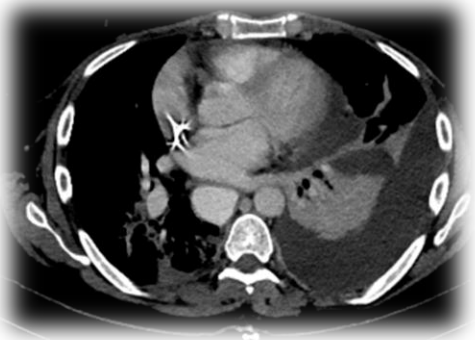
D-7 Vomiting
Fever



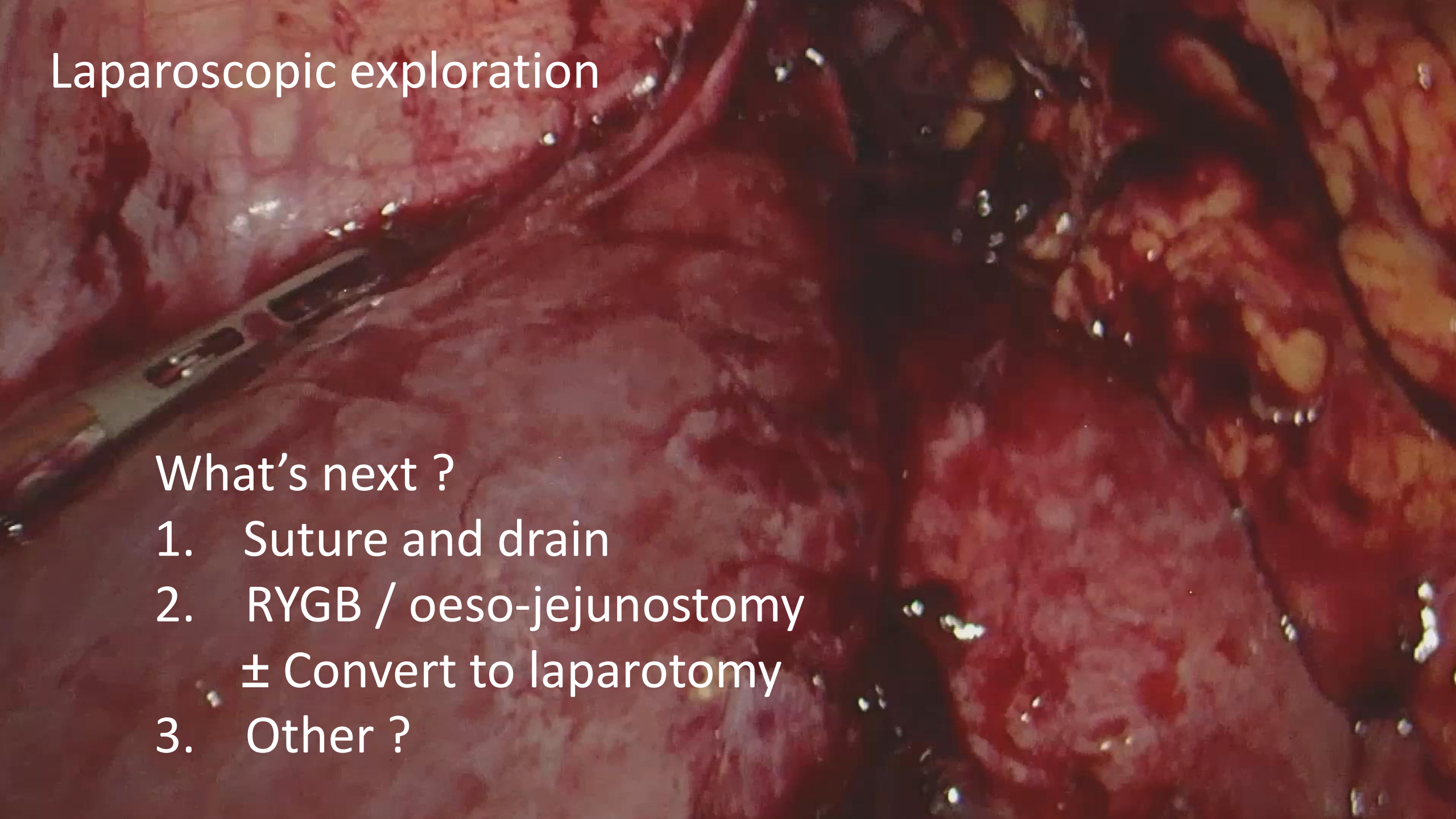
D-10 Endoscopic stent



D17
Multi
organ failure



Laparoscopic exploration

A laparoscopic view of the abdominal cavity. The image shows the peritoneal surface with various organs and structures. A surgical instrument is visible on the left side, and the overall scene is illuminated with a reddish hue typical of laparoscopic surgery.

What's next ?

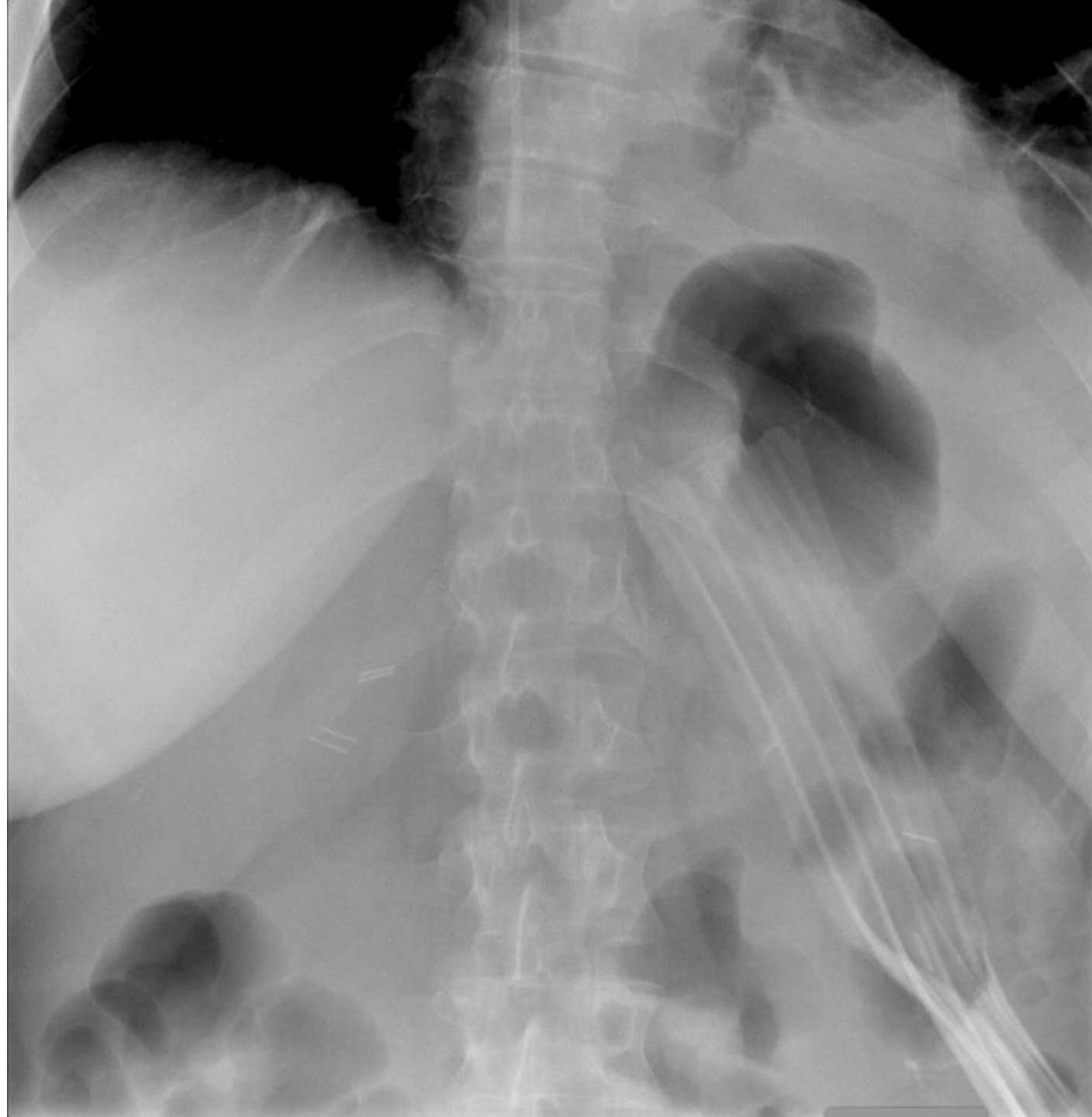
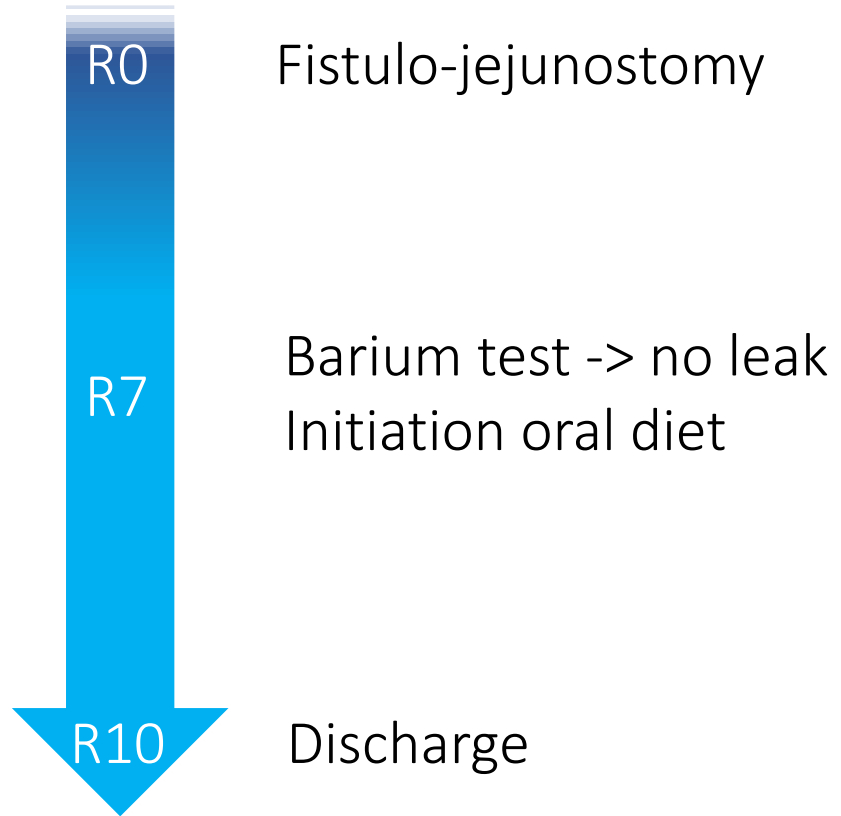
1. Suture and drain
2. RYGB / oeso-jejunosomy
± Convert to laparotomy
3. Other ?

3 . Transit bipartition with Roux-en-Y fistulo-jejunostomy

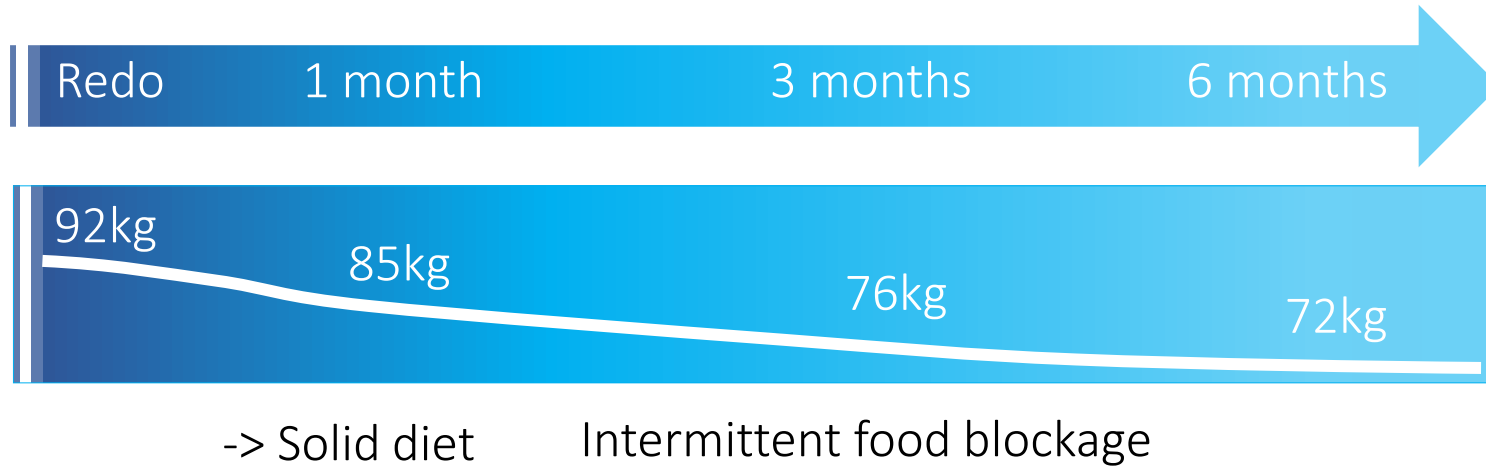


Transit bipartition with Roux-en-Y fistulo-jejunostomy

Post-operative outcome

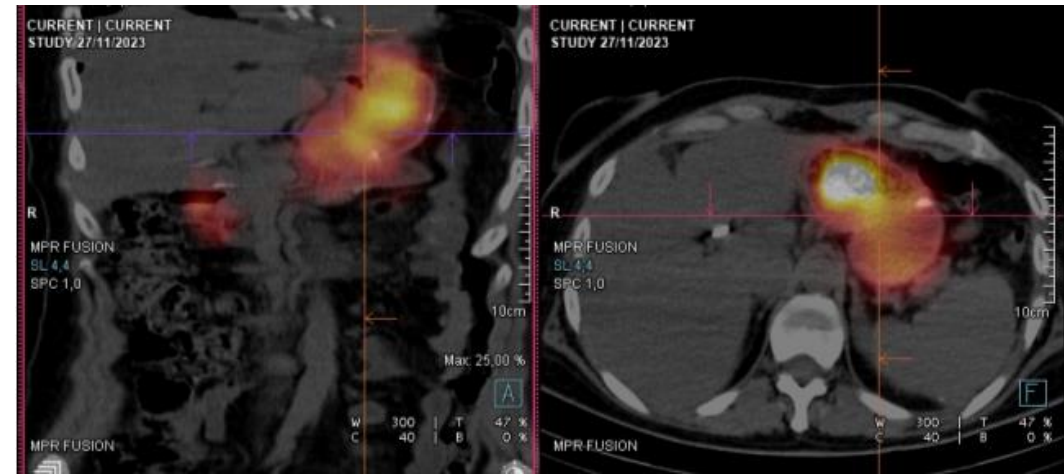


Post-operative outcome



Good quality of life

Isotopic meal



Transient tracer stagnation in the gastric pouch

No revisional surgery
-
Follow-up by initial center

Take home messages



Specific expertise required for any novel procedures

Do not delay reintervention / referral

Roux-en-Y fistulo-jejunostomy

Chouillard et al; *Surg Endosc* 2014

