

Transit bipartition surgery laparoscopy: illustration of a case

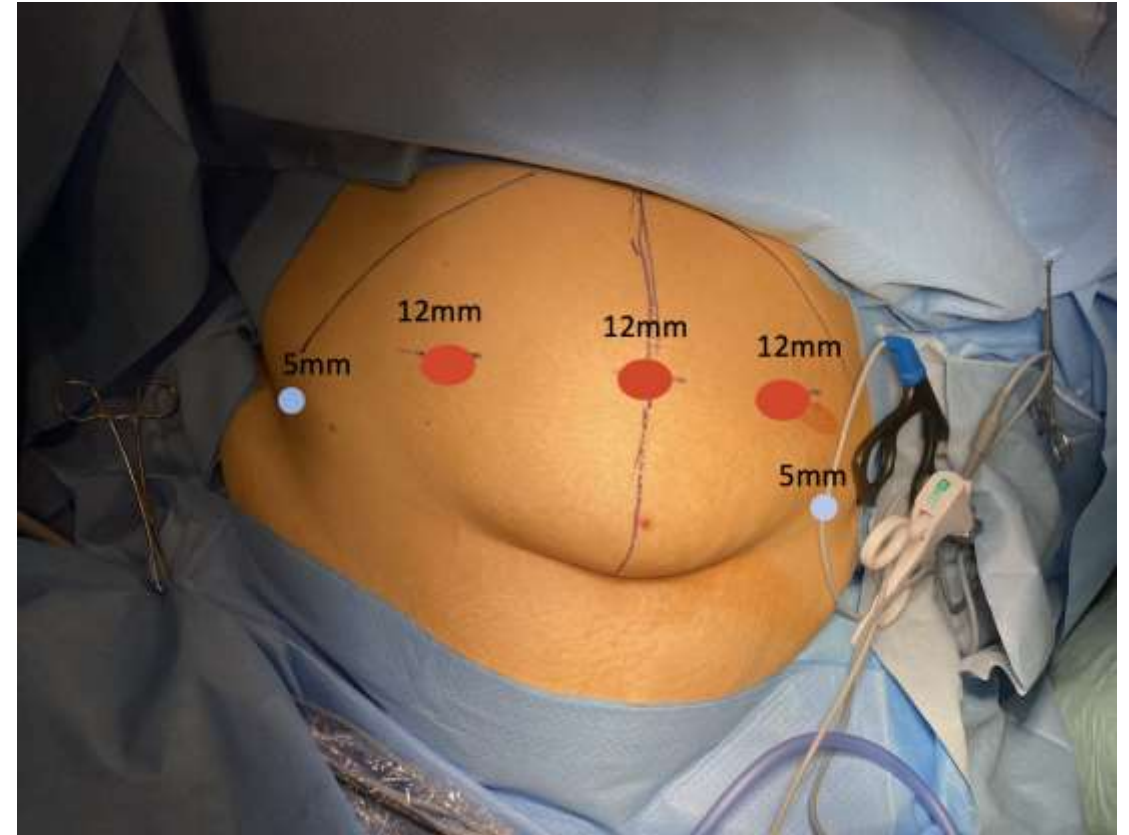
Samuel Dos Santos, Nantes, France



Clinical case

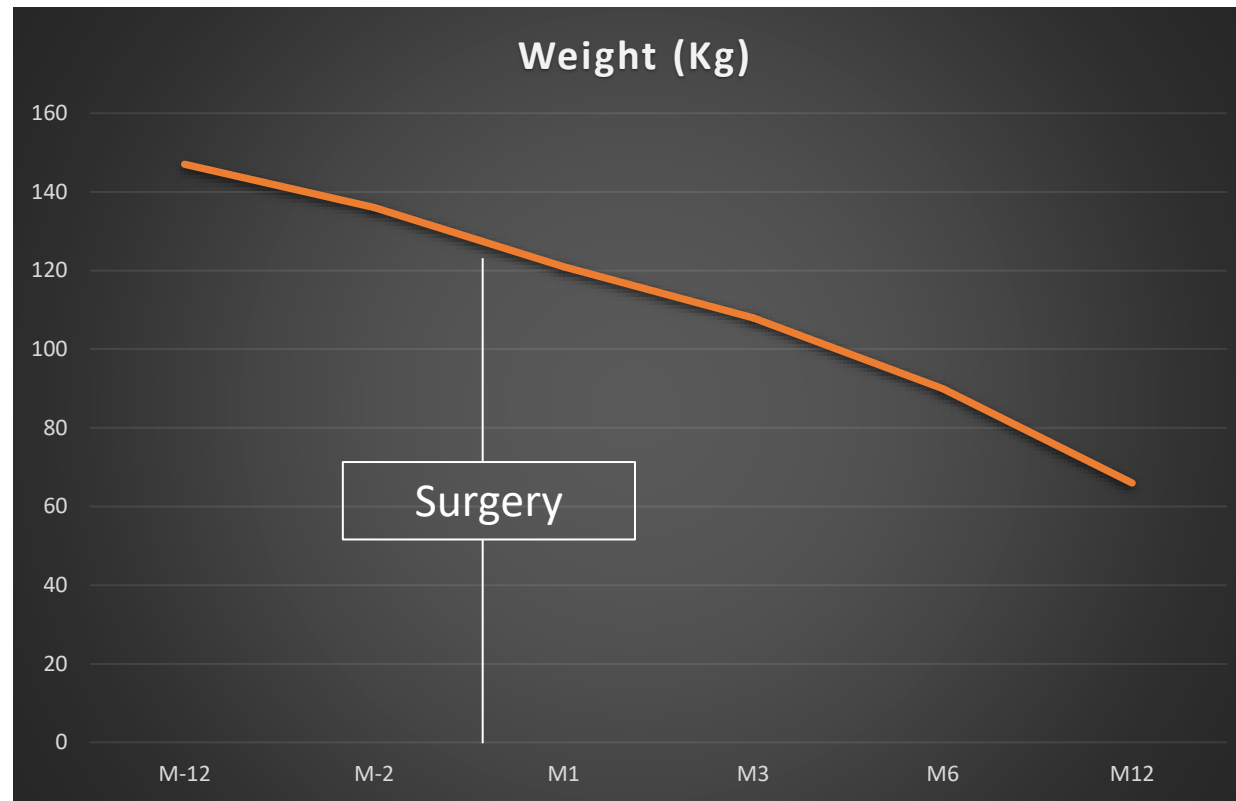
- 51-year-old man
 - Grade III obesity complicated for sleep apnea syndrome
 - Nutritional care :
 - At the beginning of the nutritional treatment, maximum weight of 180 kg (BMI: 48 kg/m²)
 - Nutritional follow-up for 1 year, weight was 136 Kg (BMI: 44.4 kg/m²)
- Inclusion of the patient in a French clinical trial:
Randomisation in the Transit bipartition group

Installation



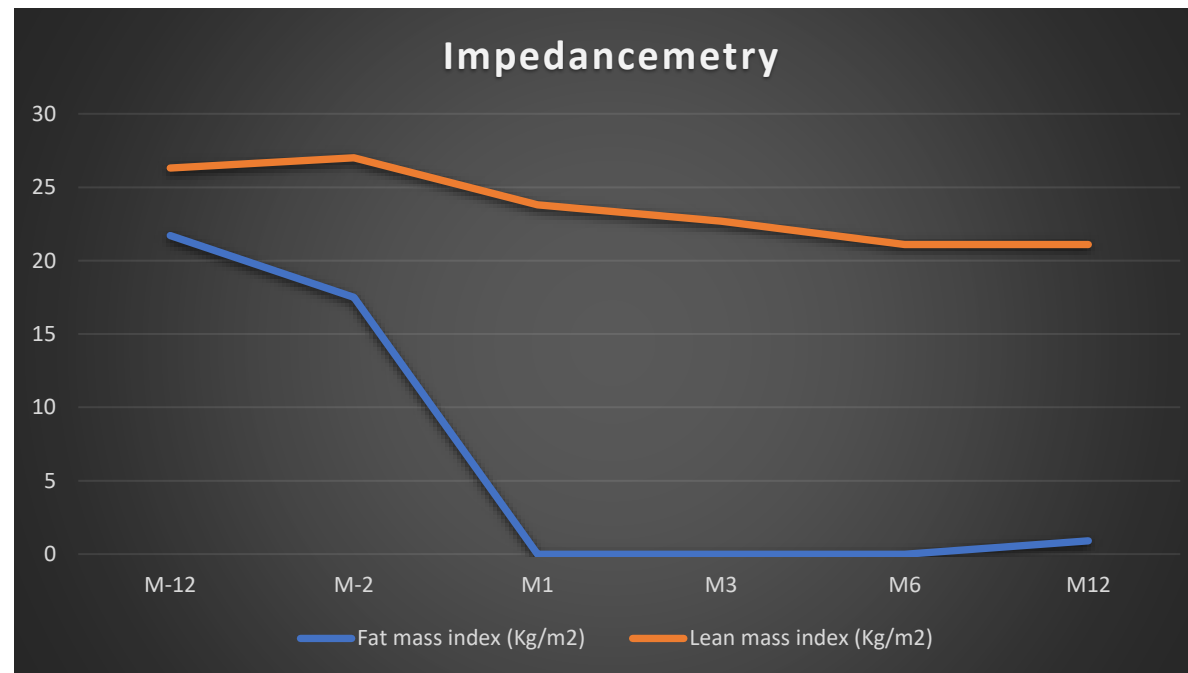
1-year follow-up

- Weight loss of 81 kg, resulting in a weight of 66 kg (BMI 21.55 kg/m²) at 1 year



1-year follow-up

- Impedancemetry shows a significant reduction in body fat and a minimal reduction in lean body mass



Thank you for your attention !

