



● Università
● degli Studi
● della Campania
Luigi Vanvitelli



Partial fundoplication (anterior), is there a role?

GIANMATTIA DEL GENIO, MD, PHD, FACS

Professore Associato

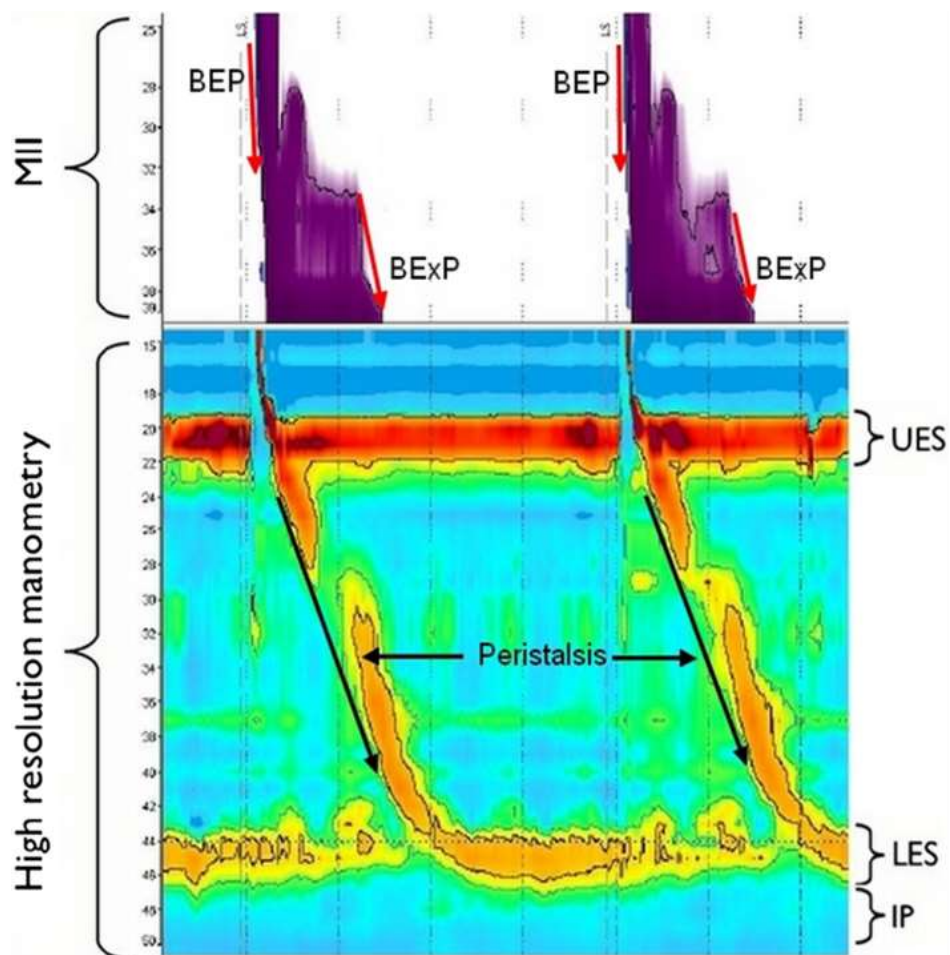
Università della Campania L.Vanvitelli



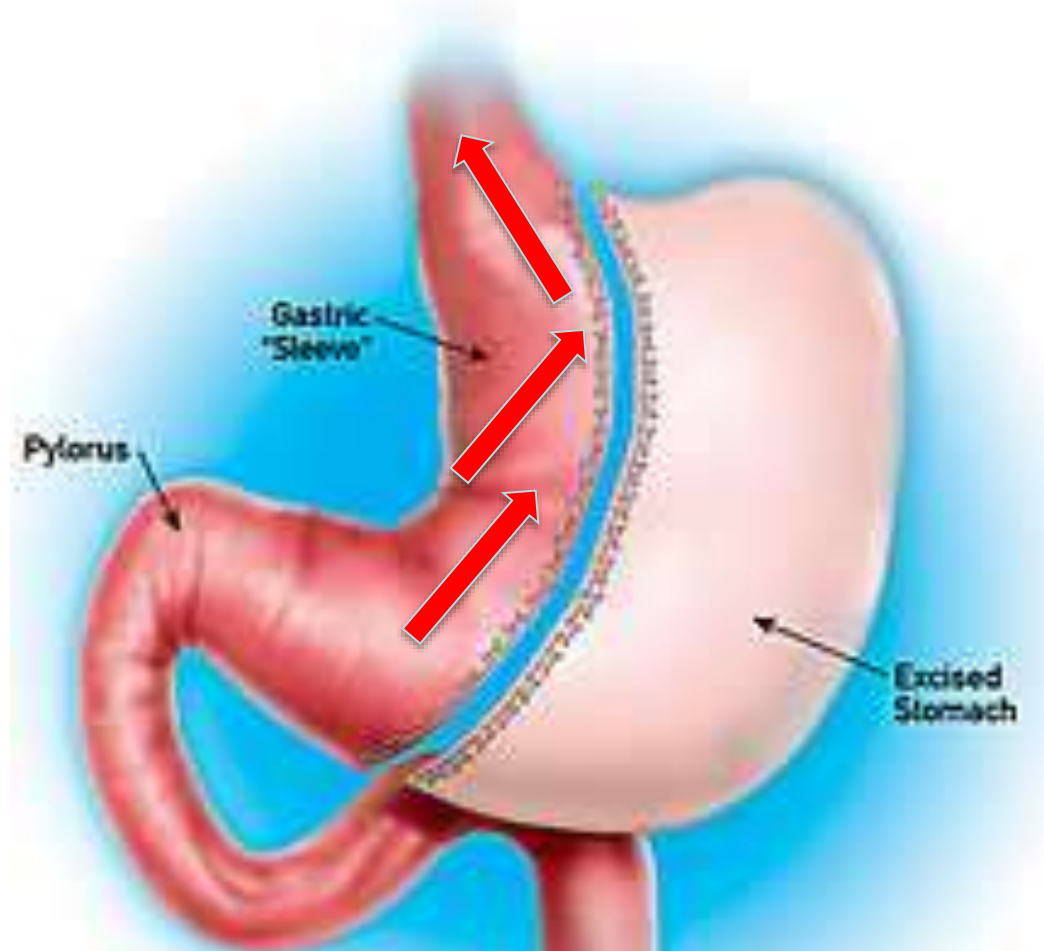


Sleeve Gastrectomy and Development of “De Novo” Gastroesophageal Reflux

Gianmattia del Genio · Salvatore Tolone · Paolo Limongelli · Luigi Bruscianno · Antonio D’Alessandro · Giovanni Docimo · Gianluca Rossetti · Gianfranco Silecchia · Antonio Iannelli · Alberto del Genio · Federica del Genio · Ludovico Docimo

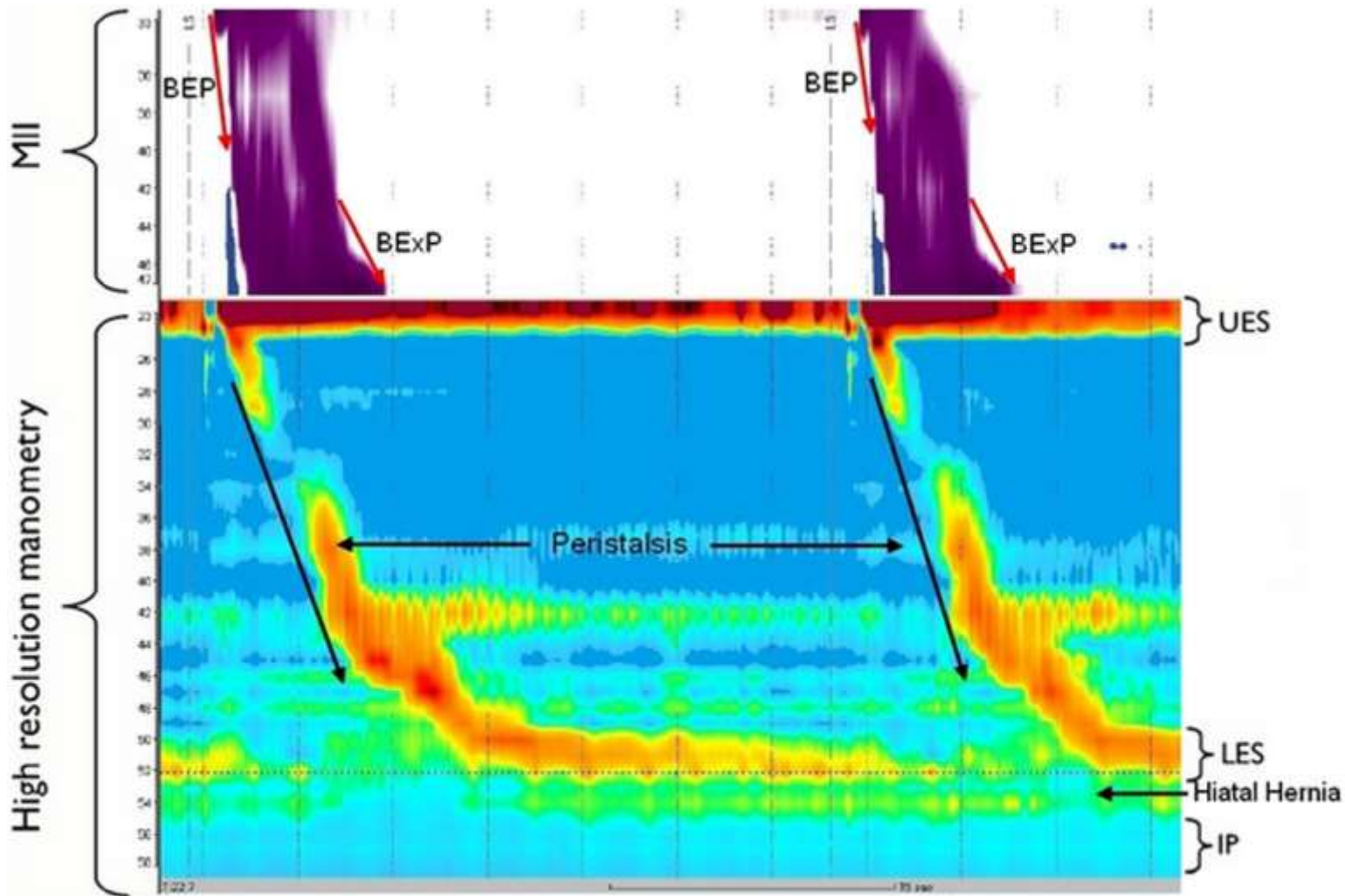


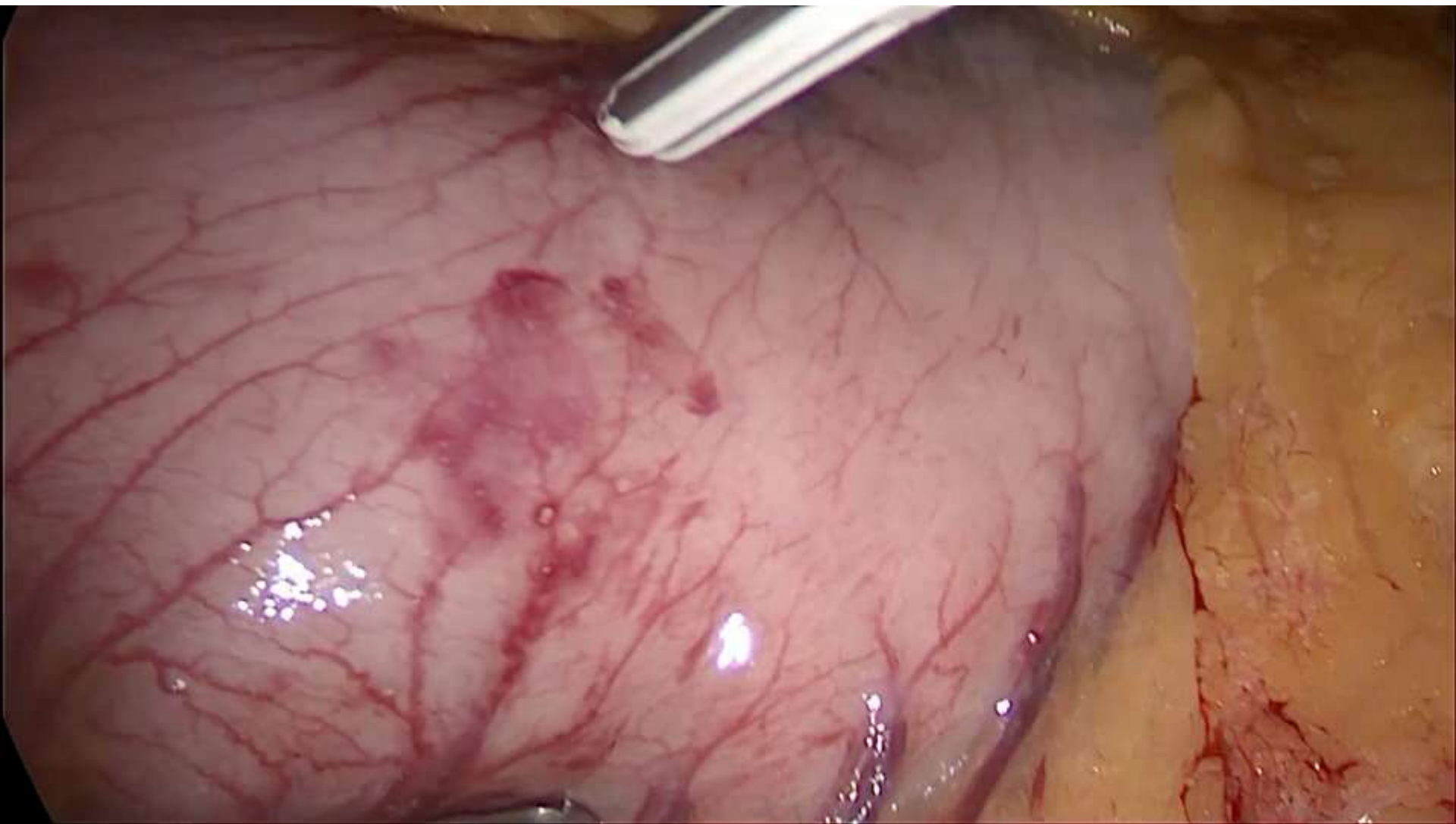
LAPLACE: ← PRESSURE /r²



REDUCED GASTRIC VOLUME
INCREASED INTRAGASTRIC PRESSURE

D-SLEEVE





- Università degli Studi
- della Campania

Luigi Vanvitelli

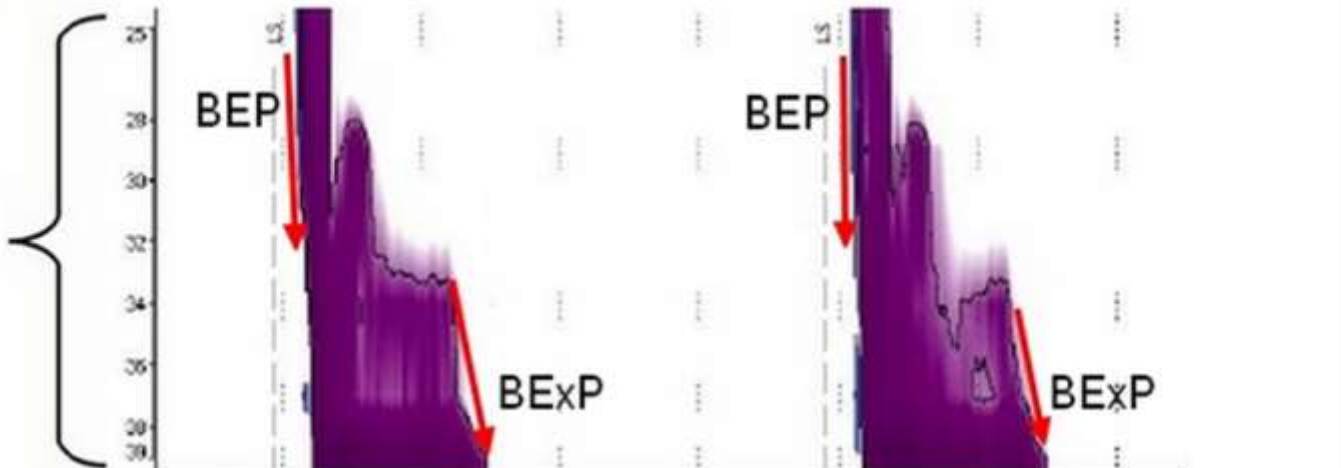


D-SLEEVE

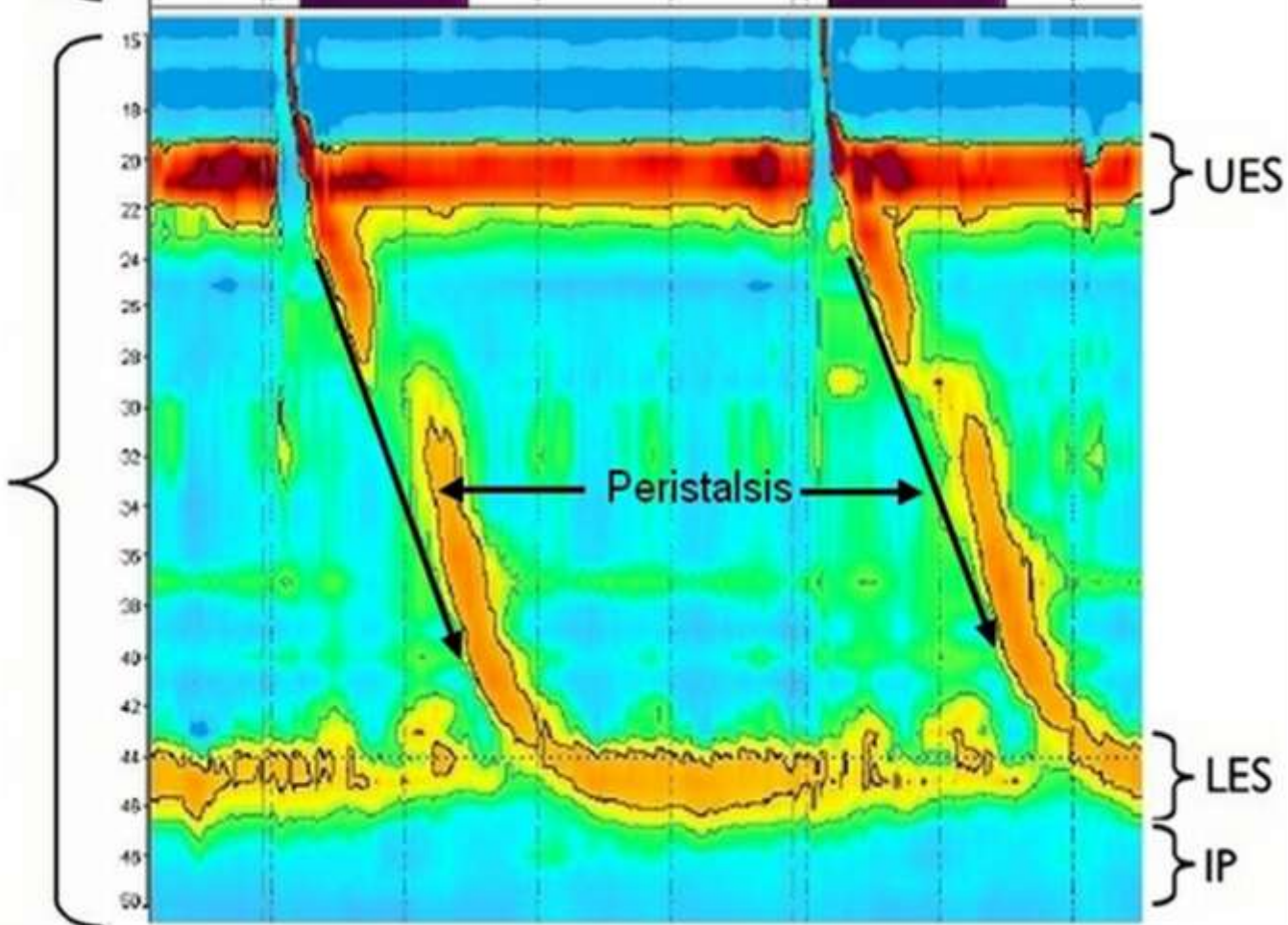




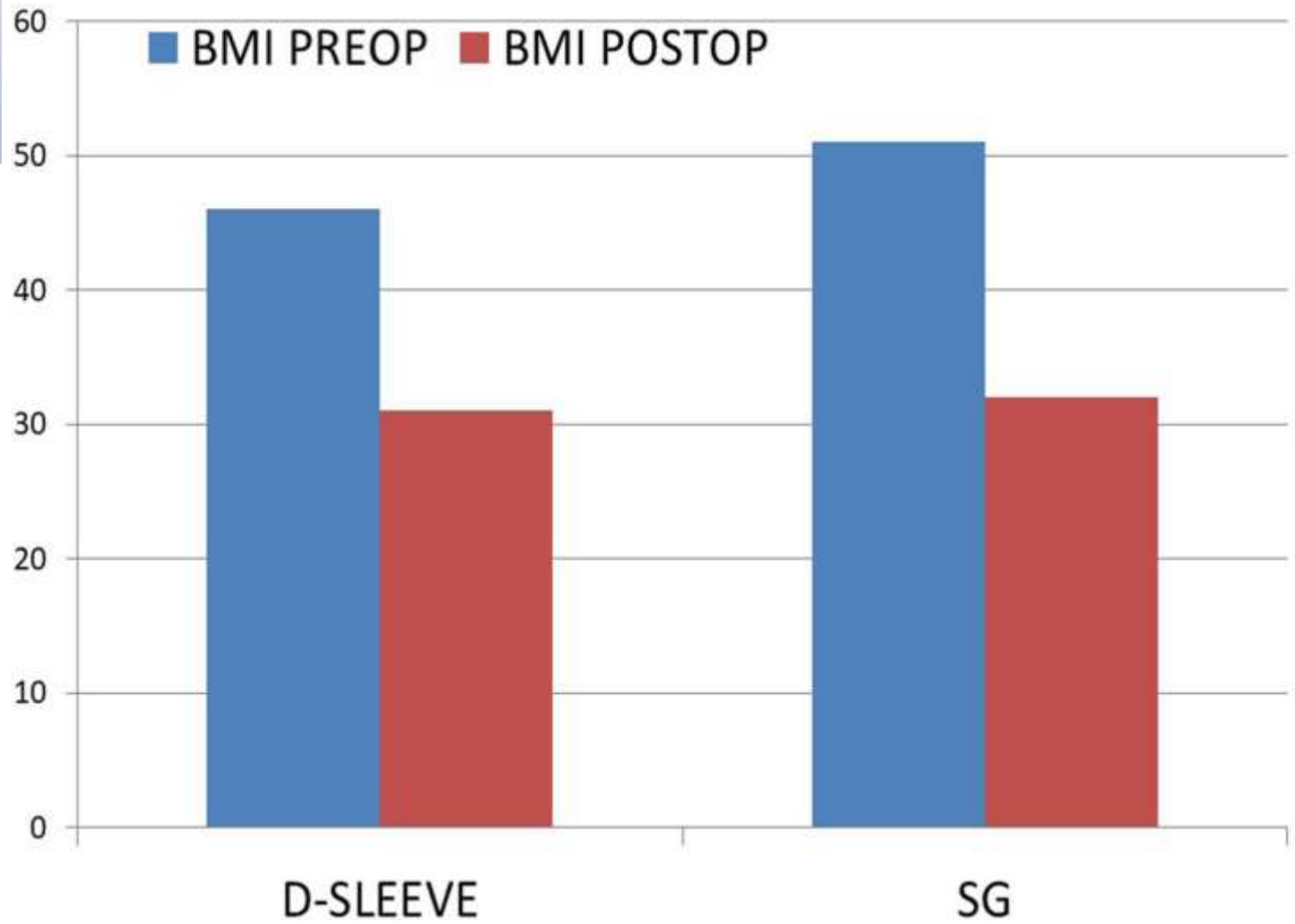
MII



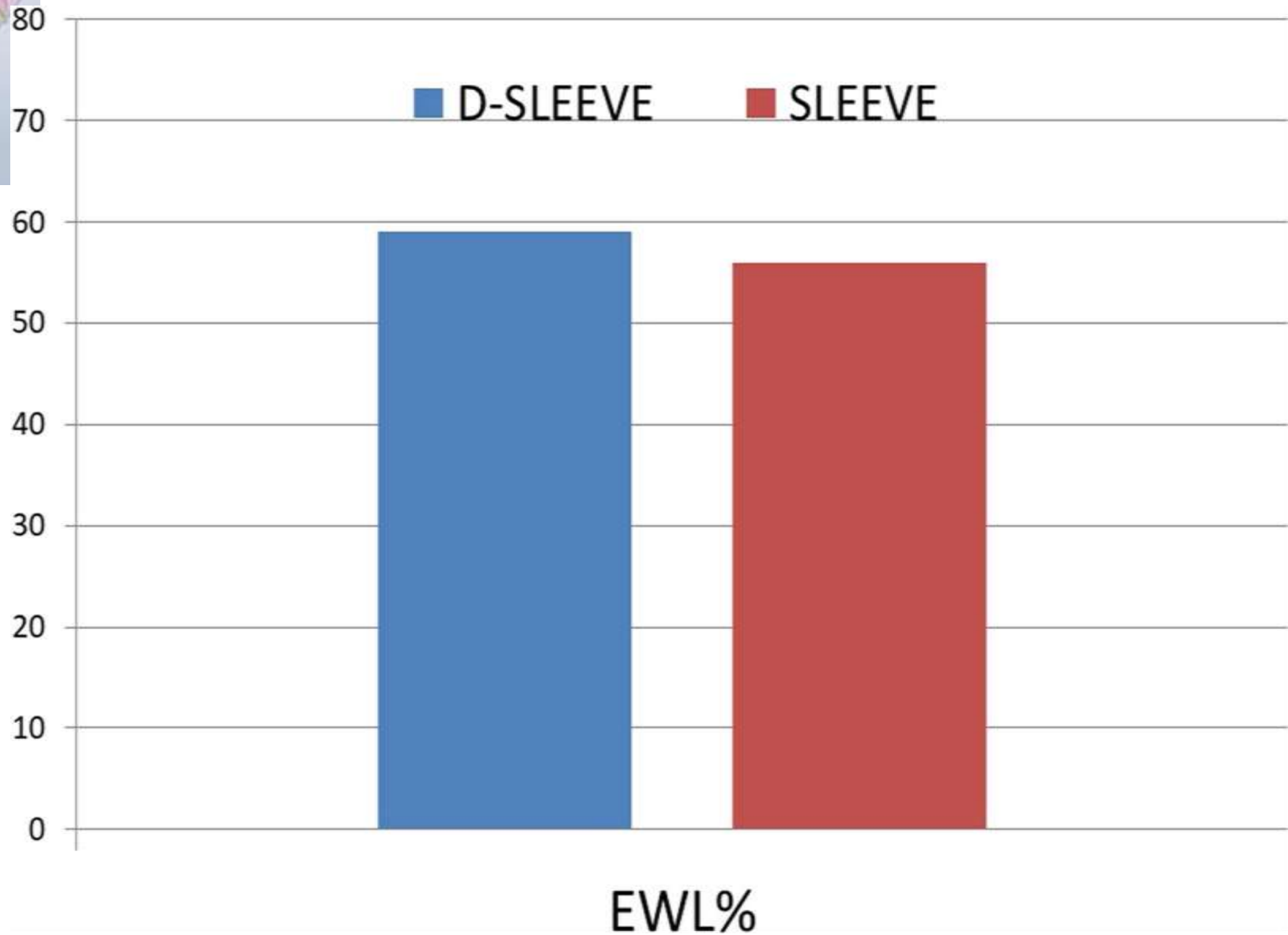
High resolution manometry



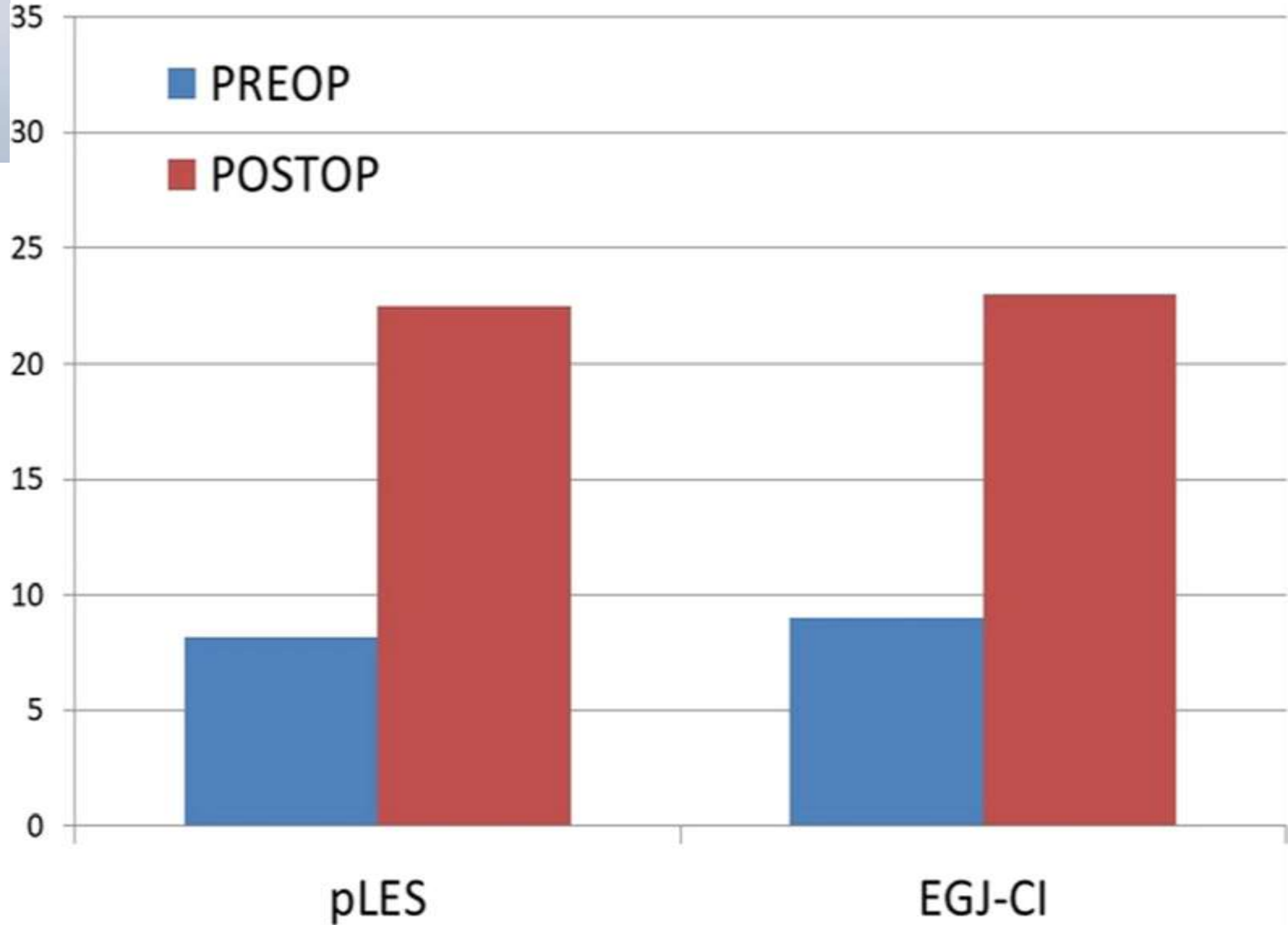
D-SLEEVE



D-SLEEVE



D-SLEEVE



D-SLEEVE



Table 2 Standard pH values detected at multichannel intraluminal impedance and pH-metry (MII-pH) before and after D-SLEEVE

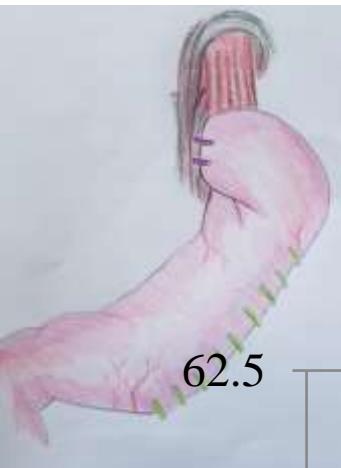
	Pre-D-SLEEVE (<i>n</i> = 32)	Post-D-SLEEVE (<i>n</i> = 32)	<i>p</i> ^d
Total [†]	5 (4–6) ^a	1.2 (0.5–2) ^a	< 0.05
Upright ^c	5.4 (4.1–6.2) ^b	1.6 (1.2–1.8) ^b	< 0.05
Recumbent ^c	4.3 (3.8–5.2) ^b	0.7 (0.5–1.0) ^b	< 0.05
DeMeester' score	20.2 (16.2–24.5) ^b	7 (4.4–10.5) ^b	< 0.05
GerdQ score	10.4 (9.2–12.5) ^b	1.6 (0.5–1.9) ^b	< 0.05

^a Values are median (IQR 25th–75th)

^b Values are mean (IQR 25th–75th)

^c Percentage of time with esophageal pH < 4

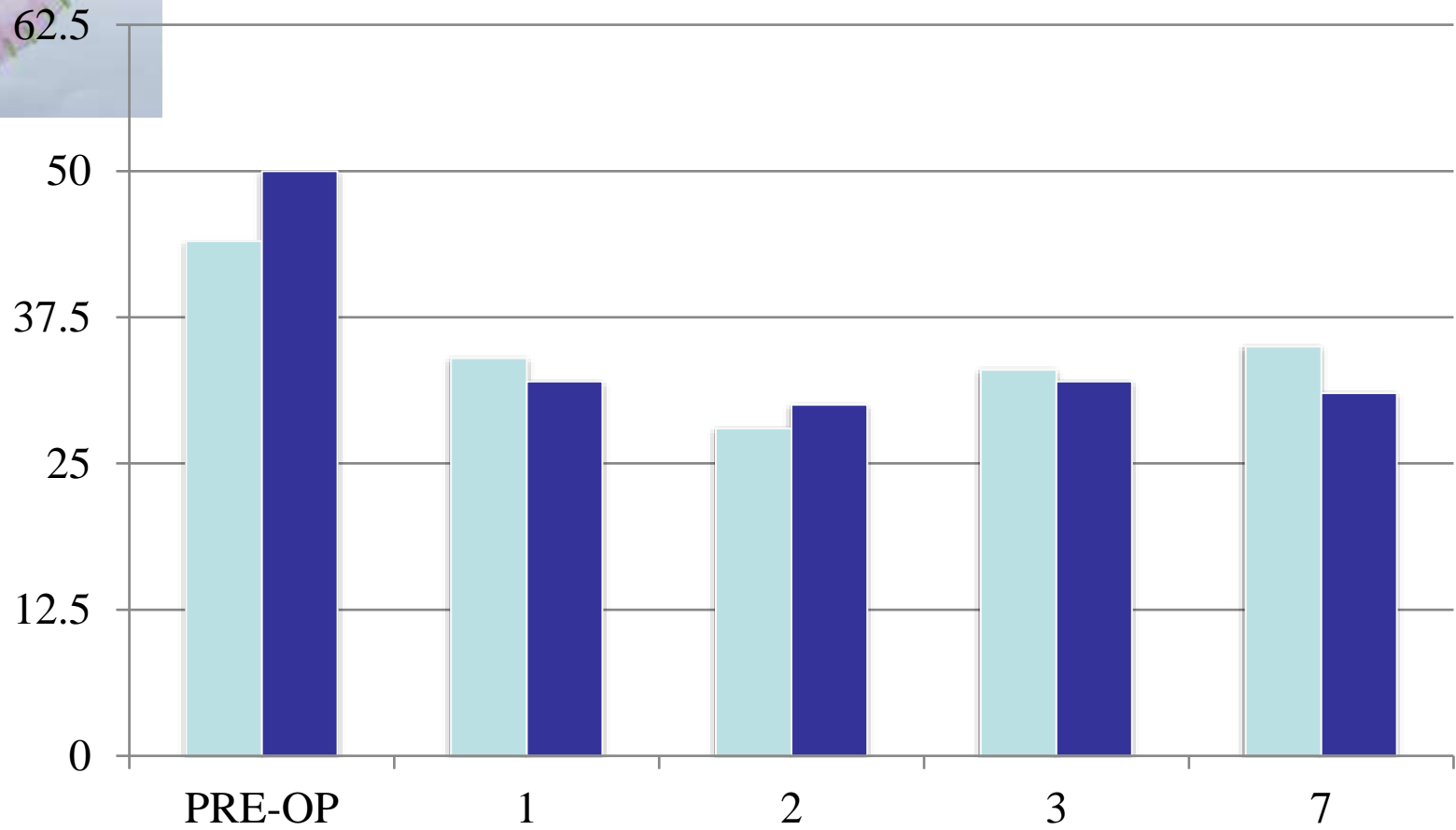
^d Wilcoxon rank sum test for paired data

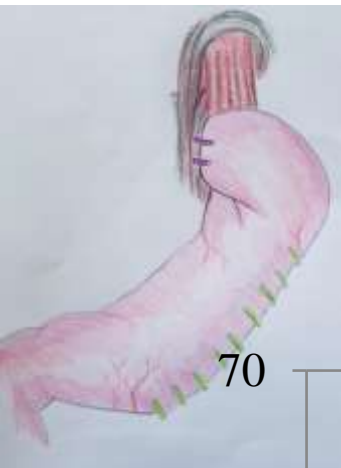


BMI

D-SLEEVE n= 151

SLEEVE n= 635

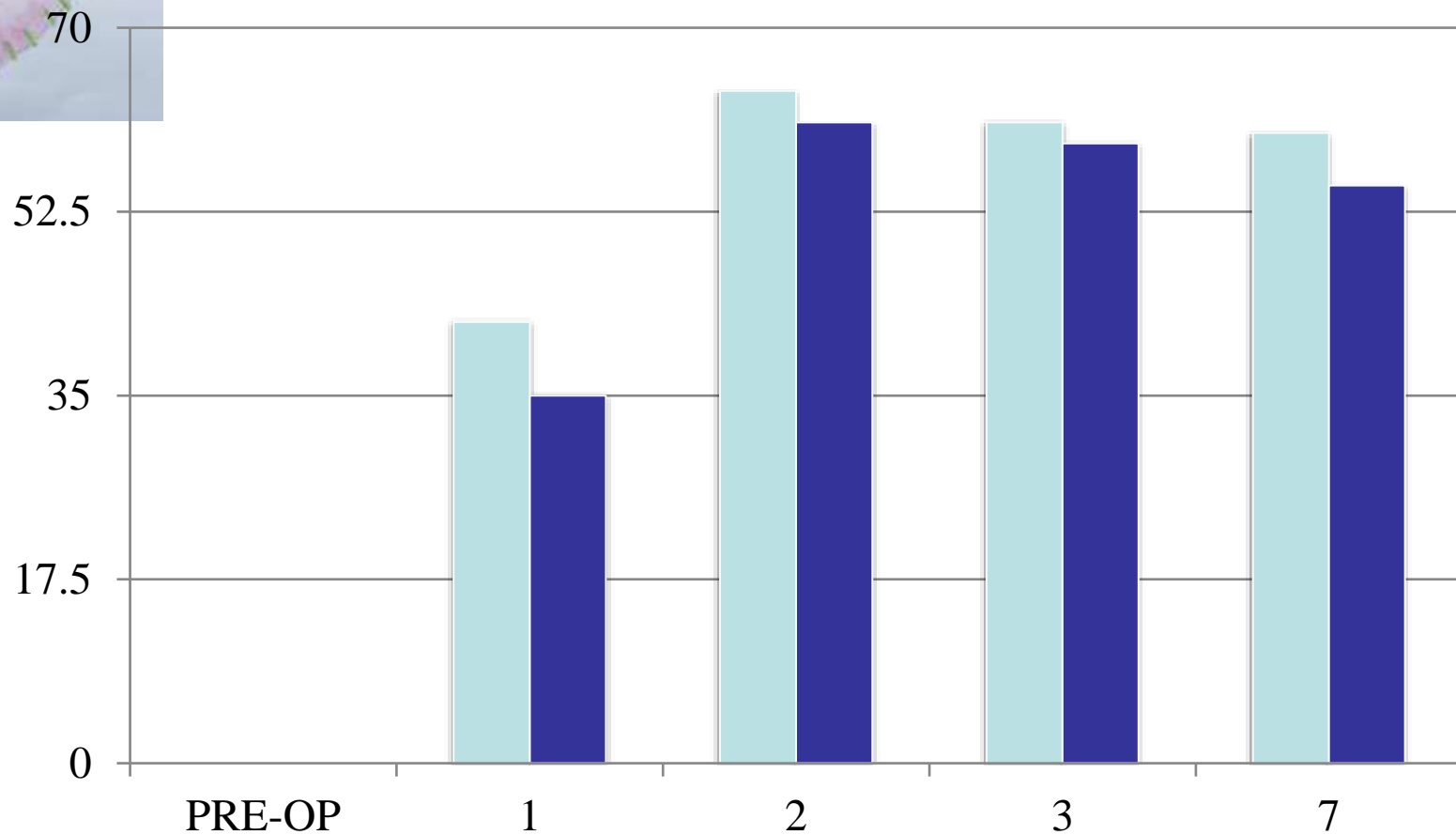




EWL%

D-SLEEVE n= 151

SLEEVE n= 635



IS GERD IN OBESE THE SAME DISEASE?



GERD

PRIMARY
DISEASE

OBESE WITH GERD

SECONDARY DISEASE



● Università
● degli Studi
della Campania
Luigi Vanvitelli



TAKE HOME MESSAGE

**FUNDOPLICATION
IS EFFICIENT TO MAINTAIN EGJ COMPETENCE
AFTER SLEEVE**

**D-SLEEVE (ANTERIOR FUNDOPLICATION) HAS
A ROLE IN PATIENTS AT RISK OF GERD AFTER
SG**