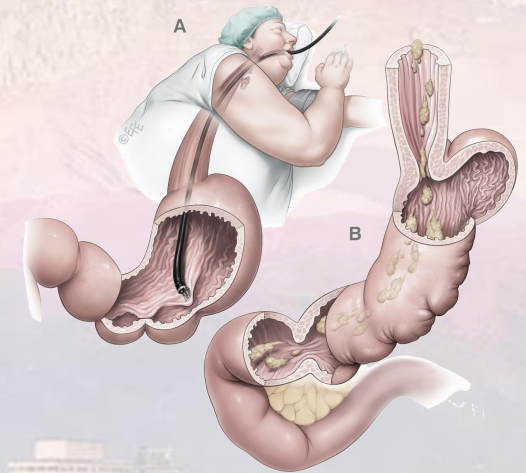
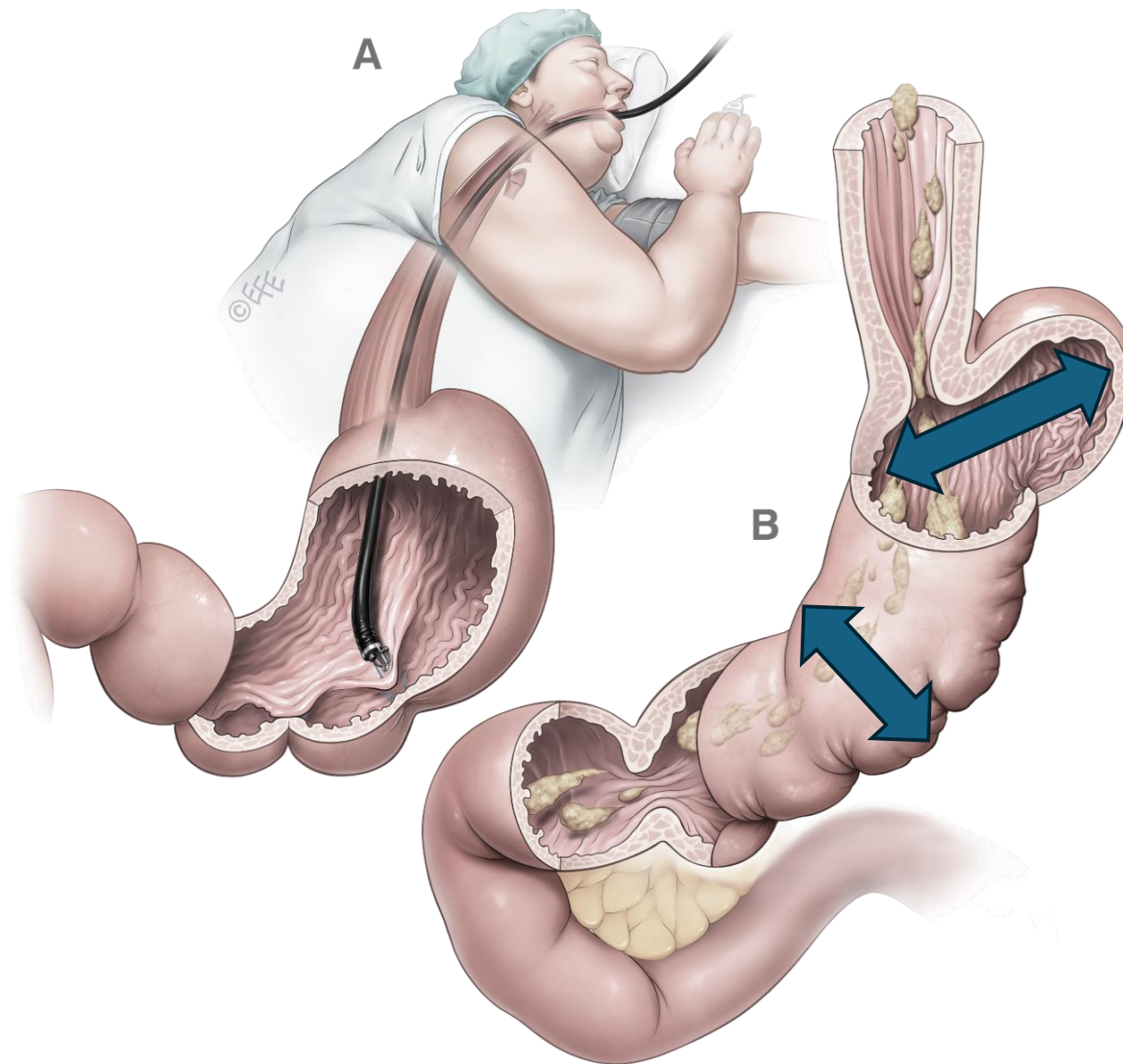
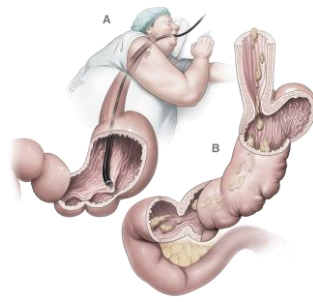


Figure: Courtesy of Prof. Volker Lange



# ESG 2025: TECHNICAL EVOLUTION AND CURRENT BEST PRACTICES





# Technical Evolution



**Double-lumen**

=>

**SX**

=>

**NXT**

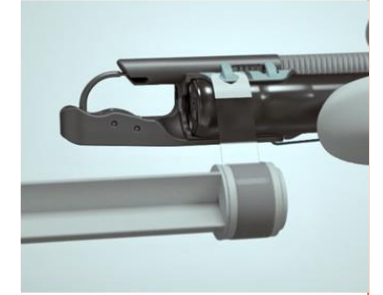


# OverStitchNXT™: IMPROVEMENTS



## Streamlined device Set Up

help reduce preparation burden on support staff.

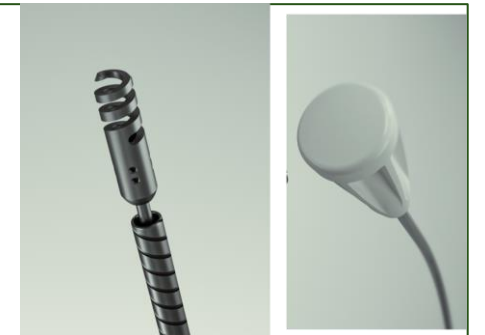


## Advanced Scope Retroflexion

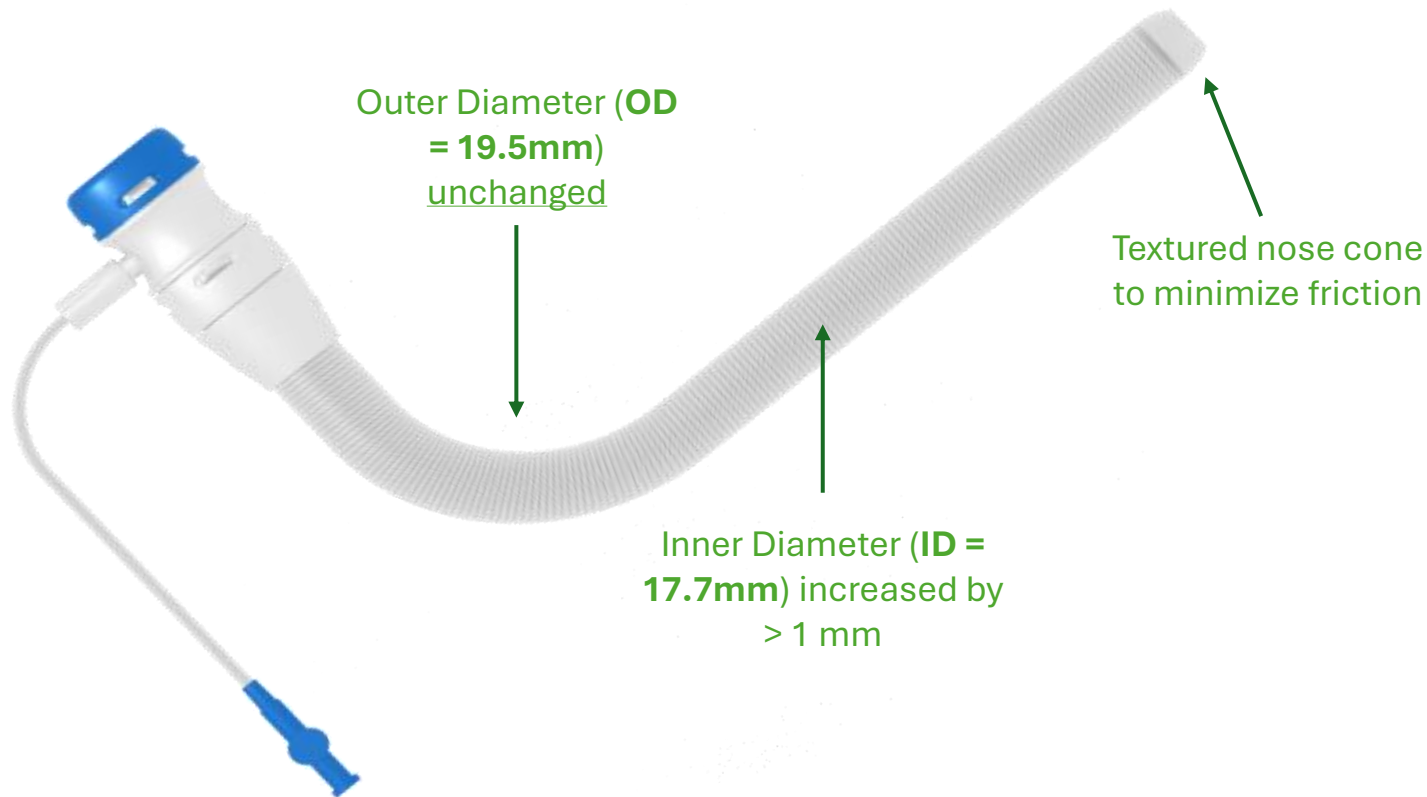
MaxFlex provides physicians with the ability to supplement control of the retroflexion capabilities of their endoscope.

## Physician Controlled Tissue Acquisition

NXT Tissue Helix Pro gives the physician full device control over tissue acquisition and suturing.



# OverTube & Scope Compatibility



NXT Optimized for	
<b>OLYMPUS</b>	<b>PENTAX MEDICAL</b>
GIF-Q180	EG-2770k
GIF-H290	EG-2790K
GIF-H190	EG27-i10
GIF-Q150	EG-2790i
GIF-Q165	EG-290Kp*
GIF-H260*	EG29-i10*
GIF-Q160*	
GIF-H180*	
<b>FUJIFILM</b>	<b>STORZ KARL STORZ – ENDOSKOPE</b>
EG-600WR	13800 PKS
EG-760R	13821 NKS*
EG-250WR5*	13801 PKS*
EG-530WR*	
EG-590WR*	
EG-580RD*	
EG-600ZW*	

\* Scopes in upper half of Outer Diameter range of Overtube compatibility

**NOTE:** Please confirm compatibility between OverStitch NXT, the scope and the Overtube (if using one) prior to use in patient. Compatibility with these scopes are based on manufacture's specifications and measurements. The scope must be in good working condition. Refurbishing scopes could affect distal dimensions and compatibility.

# PRODUCT FEATURES

## **Assembly**

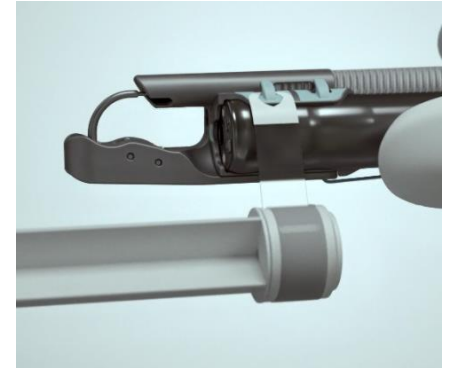
Scope alignment preset, low-profile attachment \*

## **Navigation - Max Flex**

Facilitates tissue targeting, more retroflexion

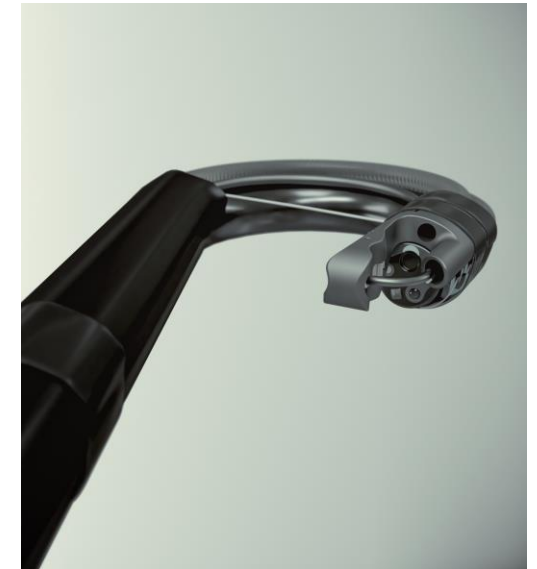
## **Tissue acquisition - Helix Pro**

Minimizes the need for an experienced assistant



# NXT – Max Flex

- **Enhance** the retroflexion pulling the string.
- Supplement **control** of the retroflexion capabilities of gastroscope. \*
- Broader ability to treat **difficult anatomies**.



\* Design Verification Internal document.

# PRODUCT FEATURES

## **Assembly**

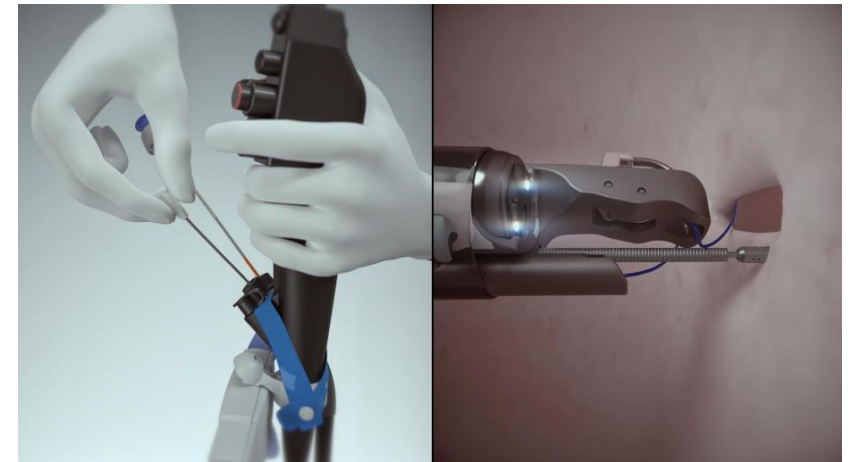
Scope alignment preset, low-profile attachment

## **Navigation – Max Flex**

Facilitates tissue targeting, more retroflexion

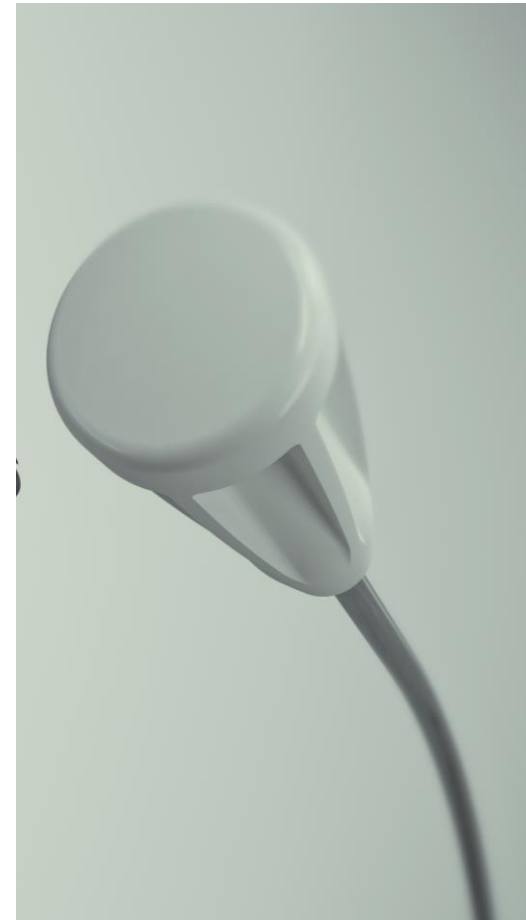
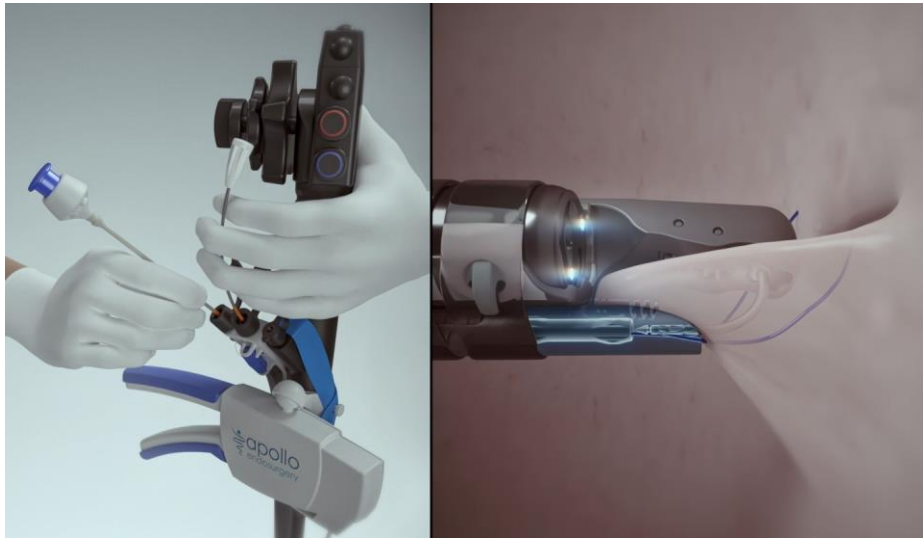
## **Tissue acquisition - Helix Pro**

Minimizes the need for an experienced assistant



# OverStitch NXT Tissue Helix Pro

- Handle: **ONE PIECE**
- Working length: **SHORTER than Tissue Helix\***
- Helix tip: **LASER CUT**



\* NXT Technical File\_TDF-00002-00R05.

**CONCLUSION => ADVANTAGES**

**FITS ON NEARLY EVERY SINGLE-LUMEN ENDOSCOPE**

## **CONCLUSION => ADVANTAGES**

**FITS ON NEARLY EVERY SINGLE-LUMEN ENDOSCOPE.**

**NO NEED TO WAIT FOR CLEANING OF THE DOUBLE-LUMEN  
ENDOSCOPE.**

**(IN OUR DEPARTMENT > 80 MIN)**



## **ADVANTAGES**

**FITS ON NEARLY EVERY SINGLE-LUMEN ENDOSCOPE**

**NO NEED TO WAIT FOR CLEANING OF THE DOUBLE-LUMEN  
ENDOSCOPE.**

**EASY TO MOUNT**

## **ADVANTAGES**

**FITS ON NEARLY EVERY SINGLE-LUMEN ENDOSCOPE**

**NO NEED TO WAIT FOR CLEANING OF THE DOUBLE-LUMEN ENDOSCOPE.**

**EASY TO MOUNT**

**NEW HELIX: OPERATED BY THE EXECUTING ENDOSCOPIST**

## **ADVANTAGES**

**FITS ON NEARLY EVERY SINGLE-LUMEN ENDOSCOPE**

**NO NEED TO WAIT FOR CLEANING OF THE DOUBLE-LUMEN ENDOSCOPE.**

**EASY TO MOUNT**

**NEW HELIX: OPERATED BY THE EXECUTING ENDOSCOPIST**

**NEW HELIX**



## **ADVANTAGES**

**FITS ON NEARLY EVERY SINGLE-LUMEN ENDOSCOPE**

**NO NEED TO WAIT FOR CLEANING OF THE DOUBLE-LUMEN ENDOSCOPE.**

**EASY TO MOUNT**

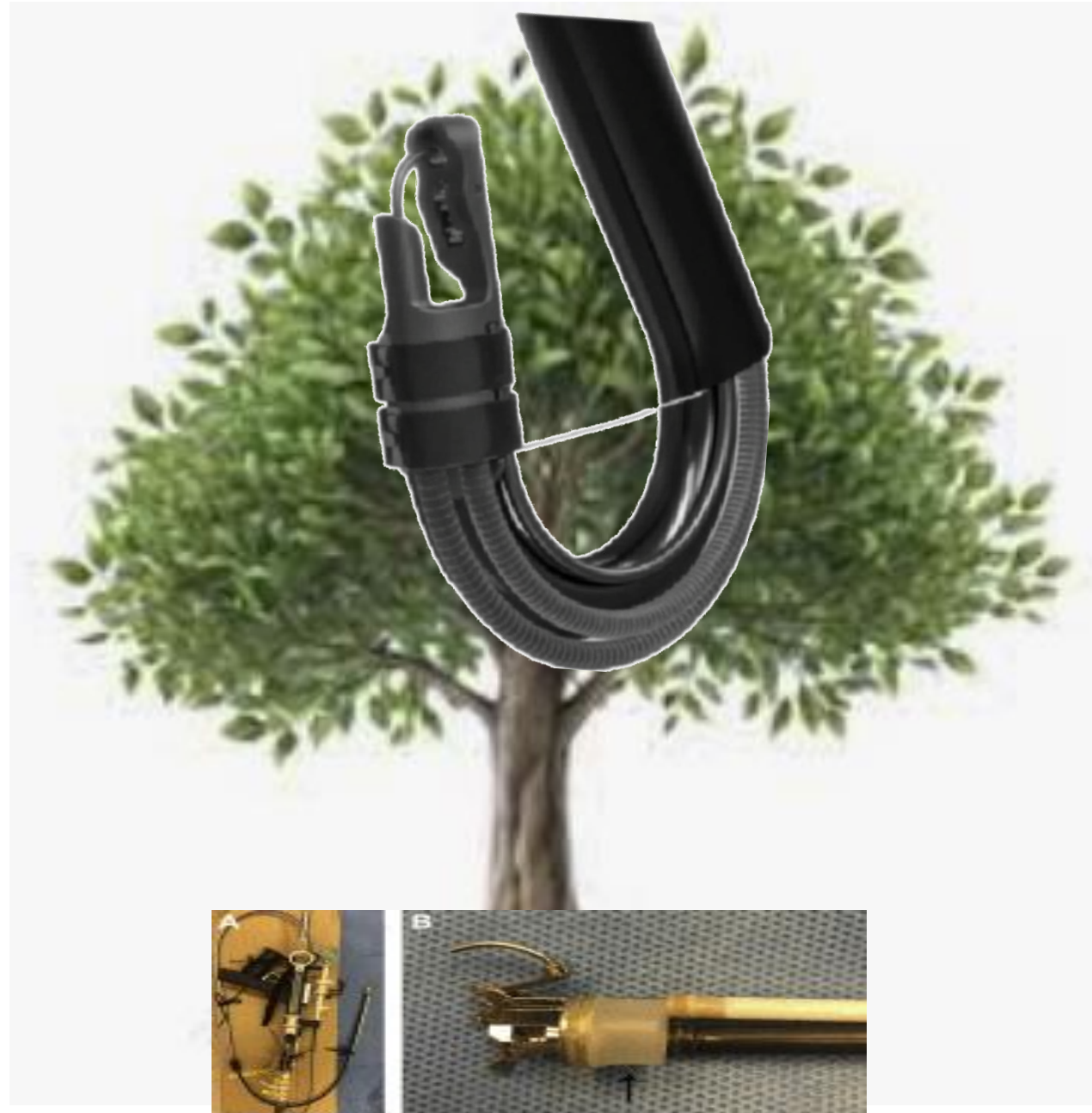
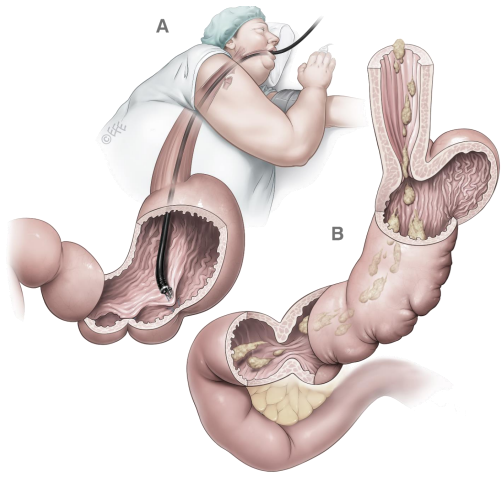
**NEW HELIX: OPERATED BY THE EXECUTING ENDOSCOPIST**

**NEW HELIX**

**CAN BE RETROFELXED  $> 180^\circ$**



# EVOLUTION



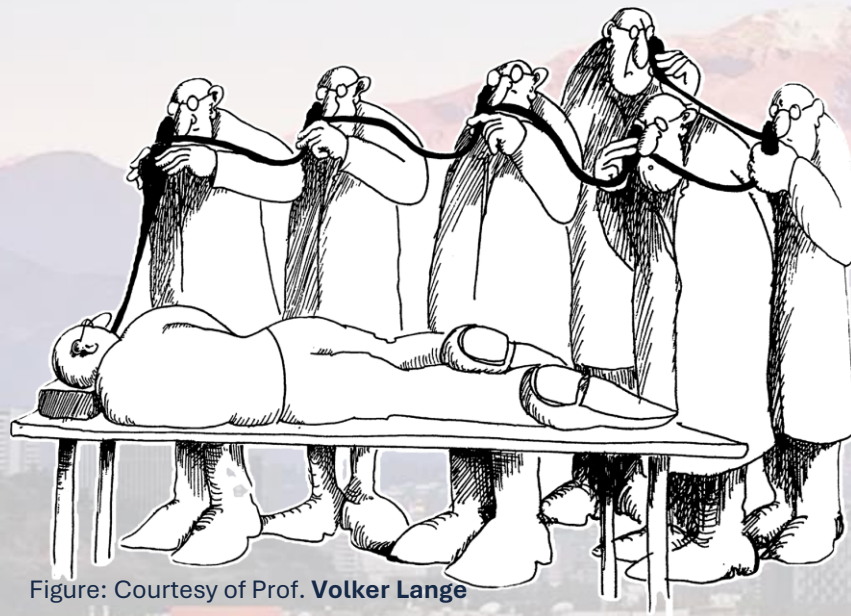
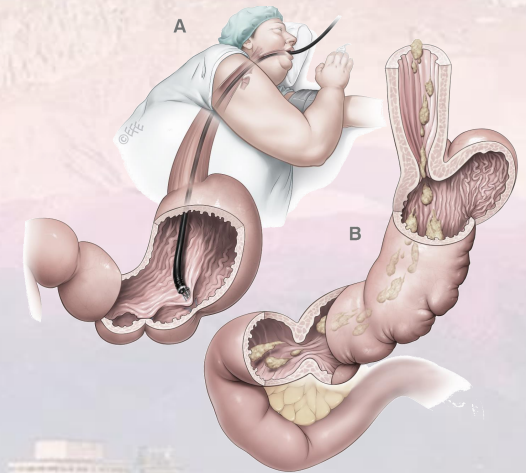


Figure: Courtesy of Prof. Volker Lange



**THANK YOU**

**ESG 2025:  
TECHNICAL EVOLUTION AND CURRENT BEST PRACTICES**