

How I do it –

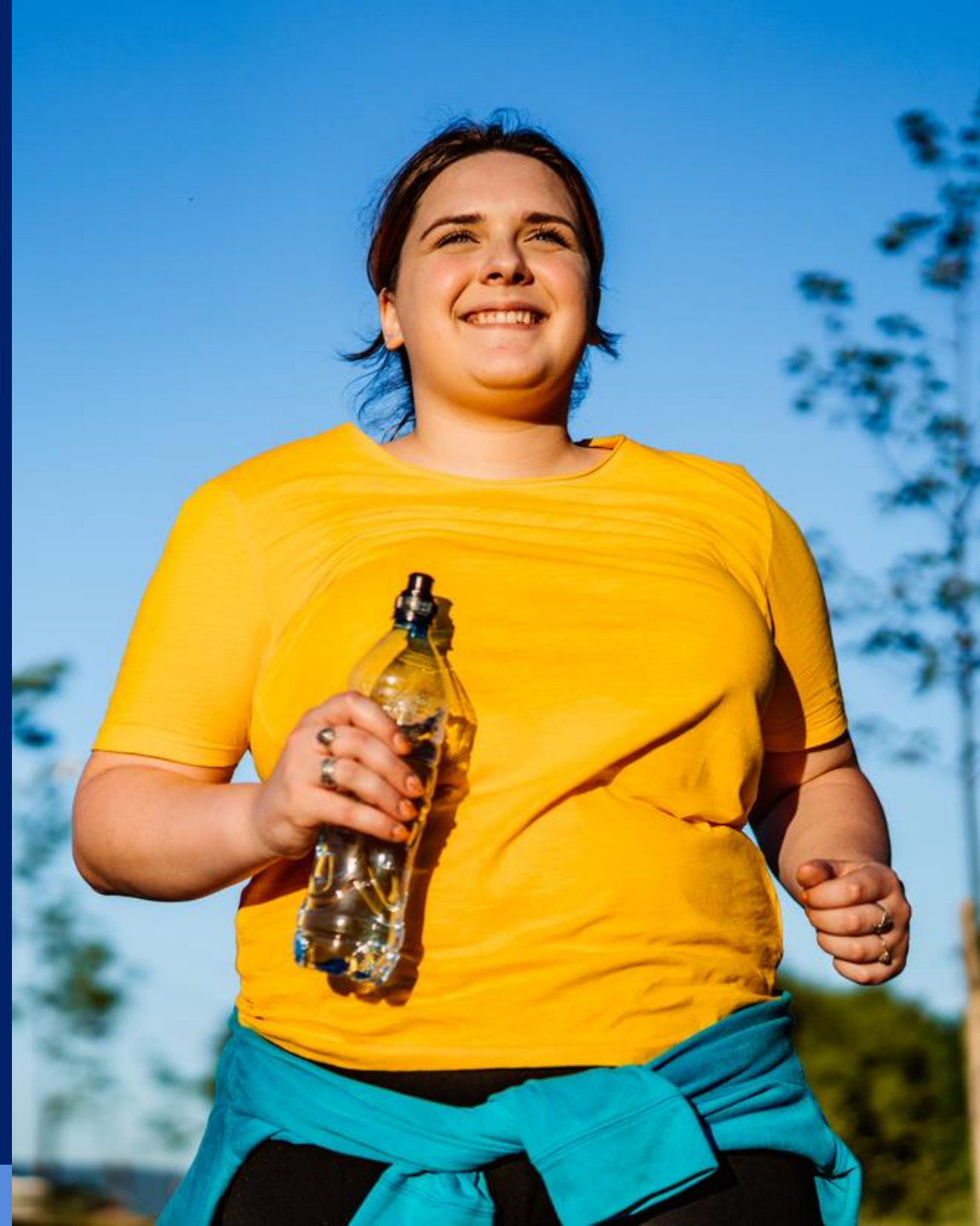
# Robotic Single Anastomosis Duodeno- ileostomy w/ Sleeve Gastrectomy

## (rSADI-S)

Sachin S. Kukreja, MD

**DFW**

BARIATRICS &  
GENERAL SURGERY

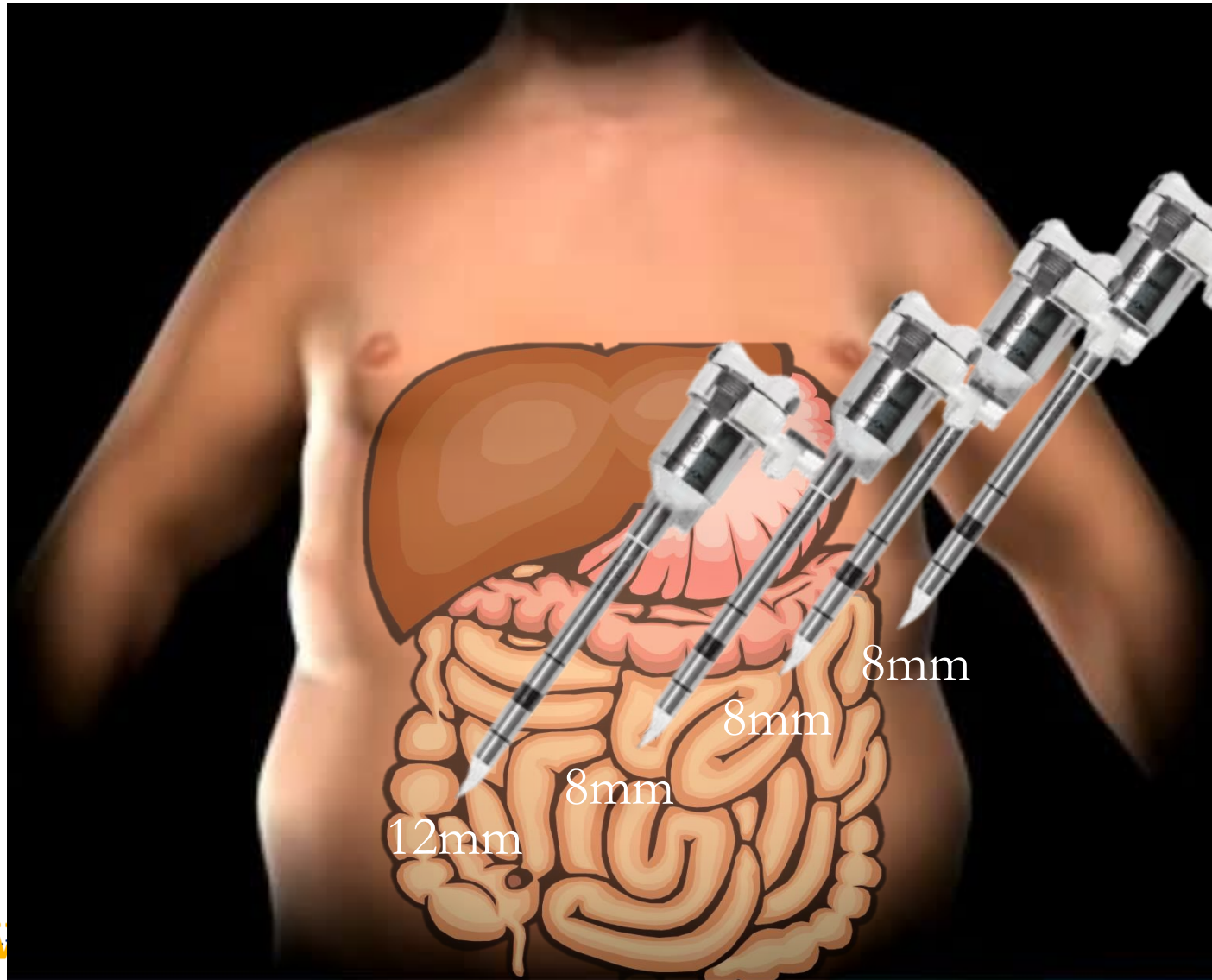


# Disclosures

- Intuitive Surgical
- Boehringer Laboratories
- Apollo Endosurgery
- Conmed



# The setup



Arm 1  
Fenestrated Bipolar, Stapler

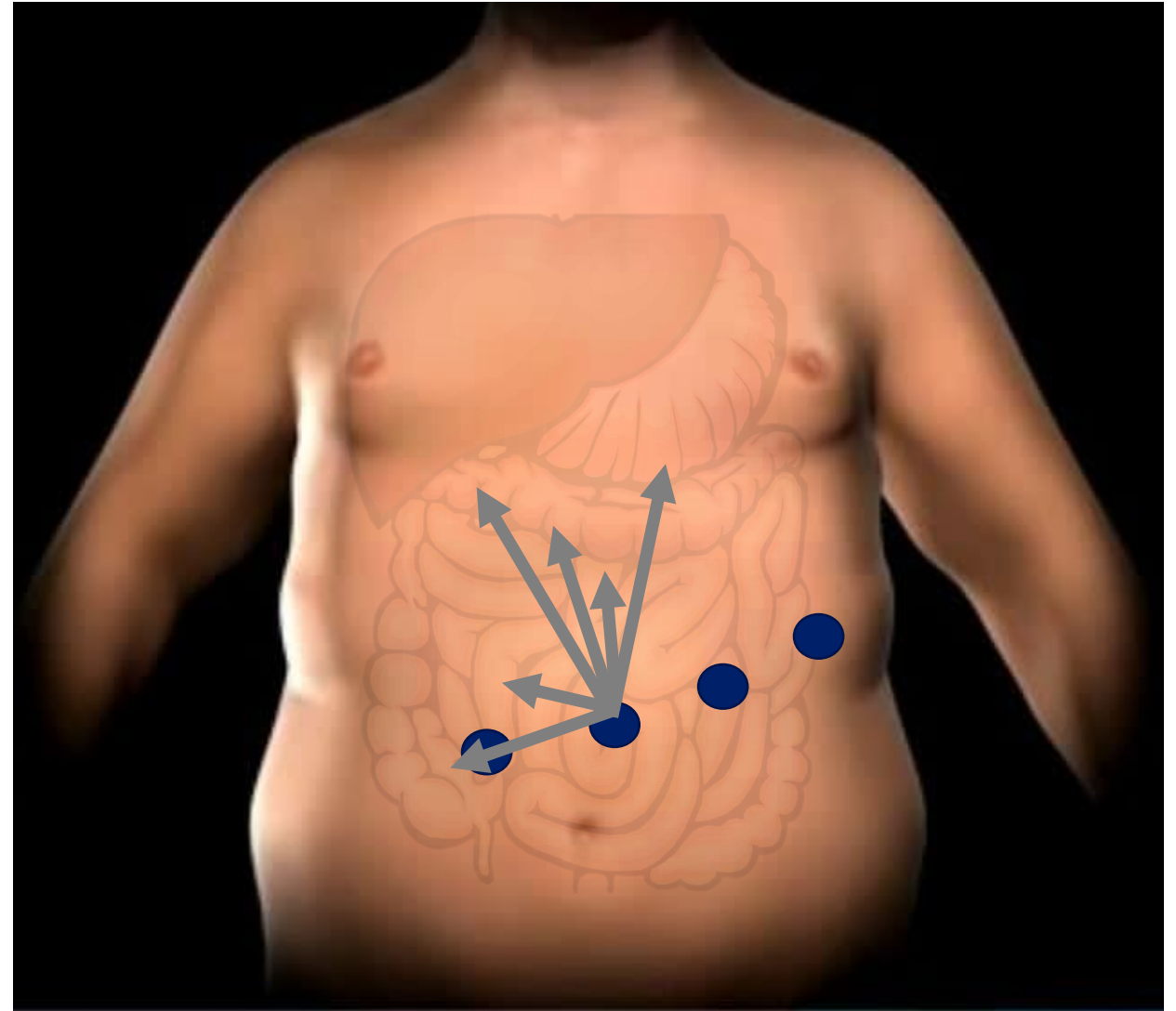
Arm 2  
Camera

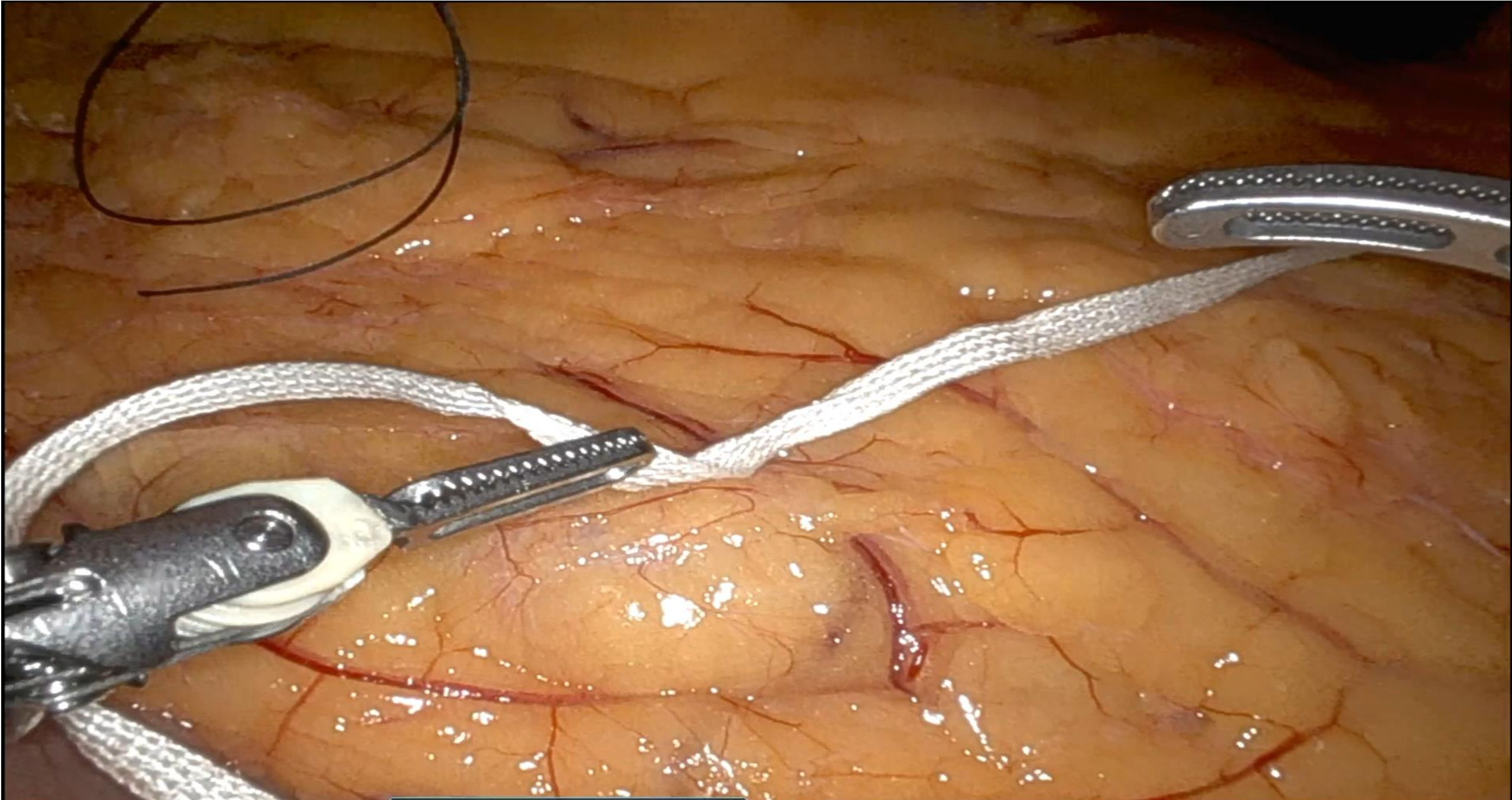
Arm 3  
VSE, Needle Driver, Scissor

Arm 4  
Cadiere

# The setup

- Arm 1 can be too low, too high
- Arm 2 gives a lower view the stomach
- Arm 3 can hit arm 2
- Arm 4 can hit arm 3, needs to be extra lateral
- Keep Arm 3 free for iTM and RLQ work
- This arrangement works for all components of a SADI or RYDS





1" FENESTRATED BIPOLAR FORCEPS

COAG

2

1° REV  0°

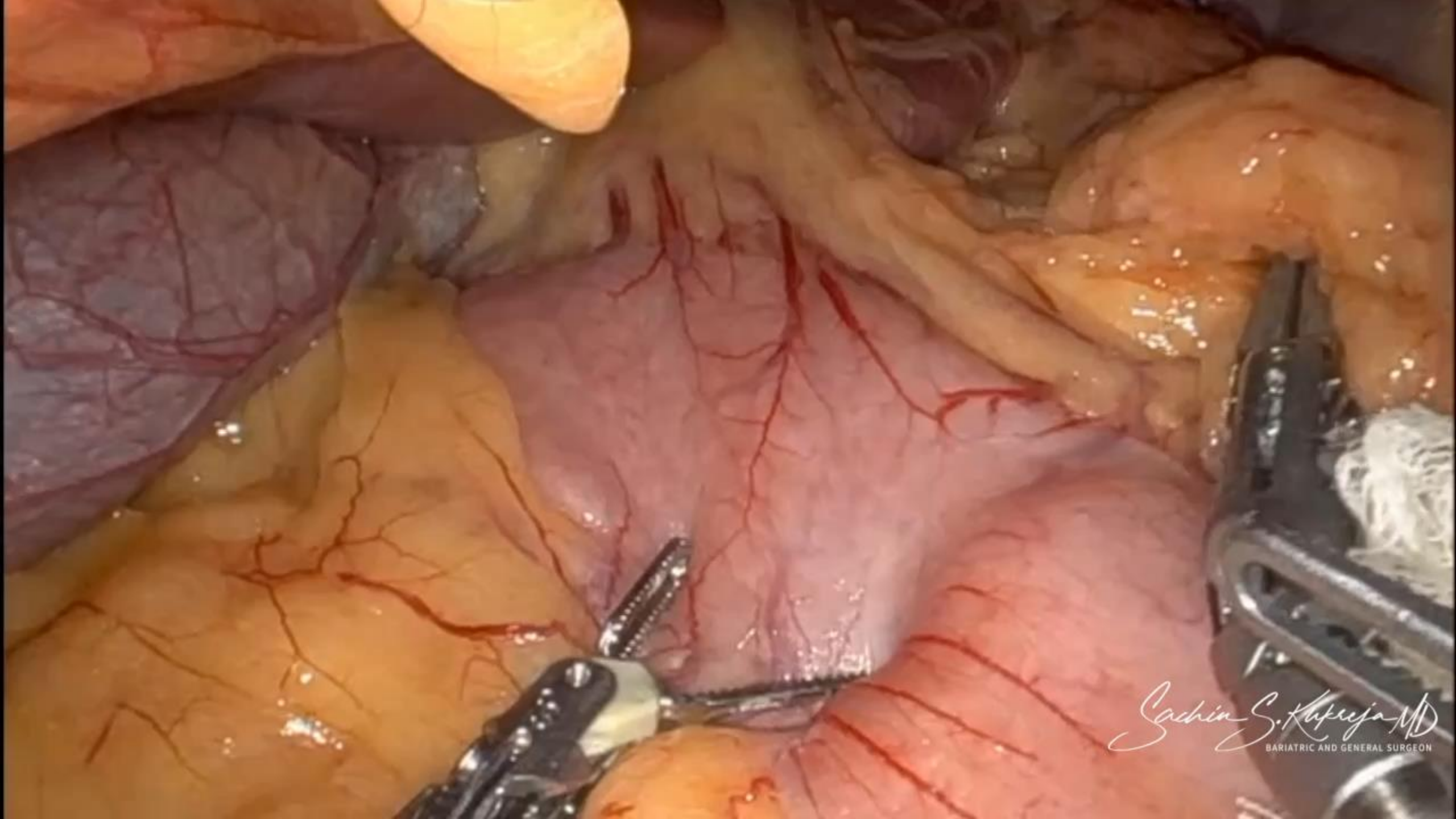
LASER OFF

1x 30°

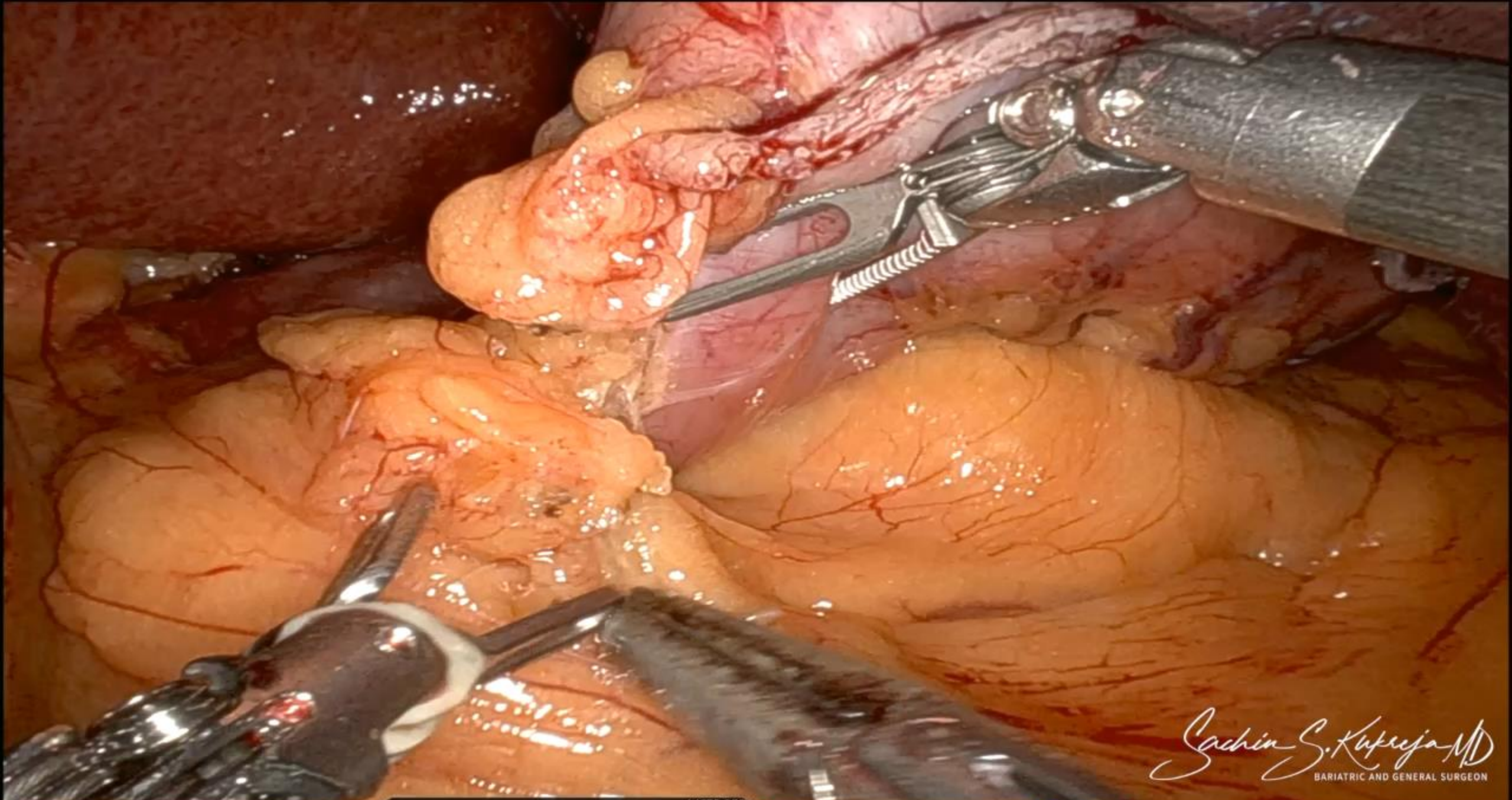
3

4"

TIP-UP FENESTRATED GRASPER

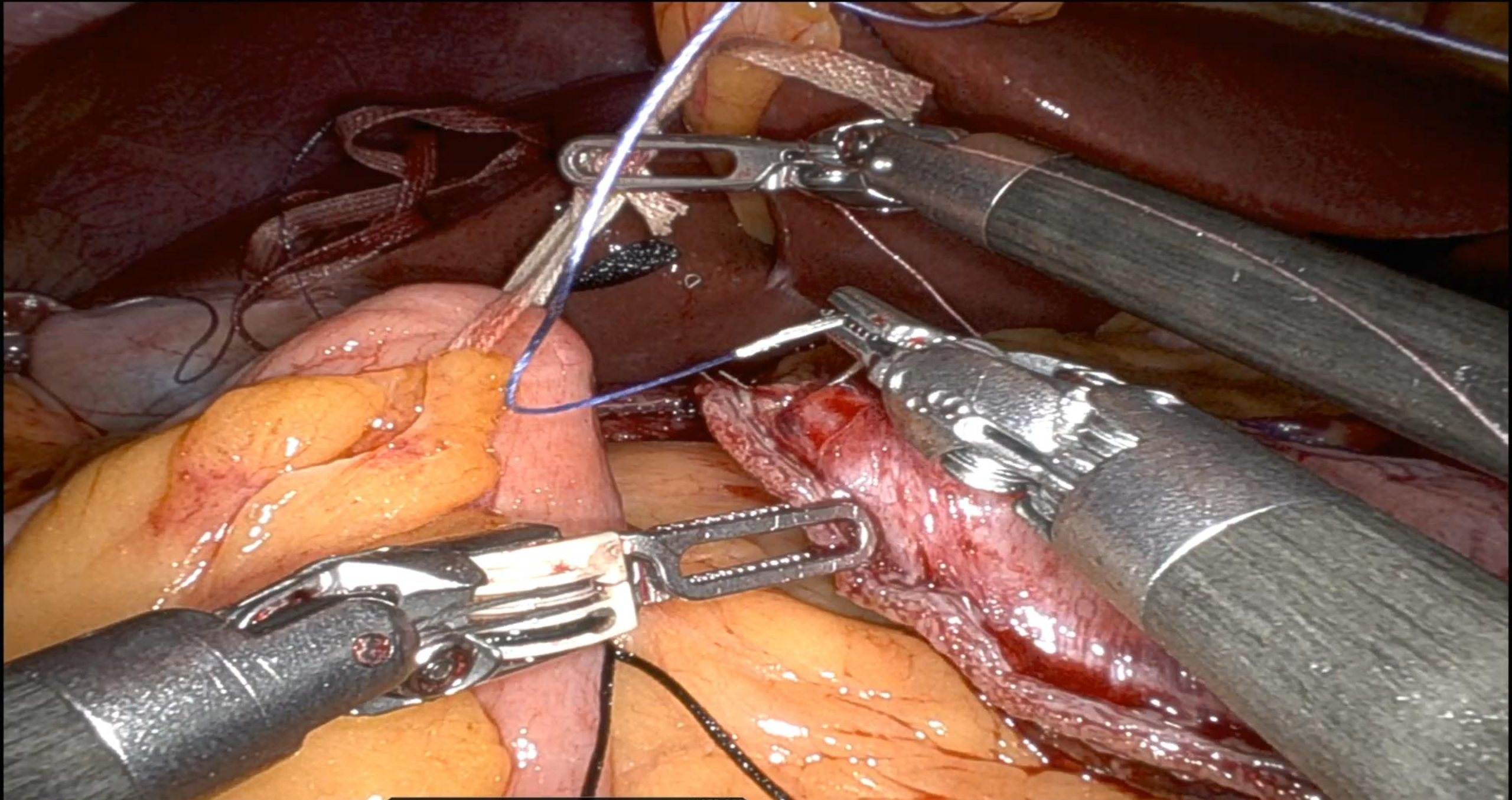


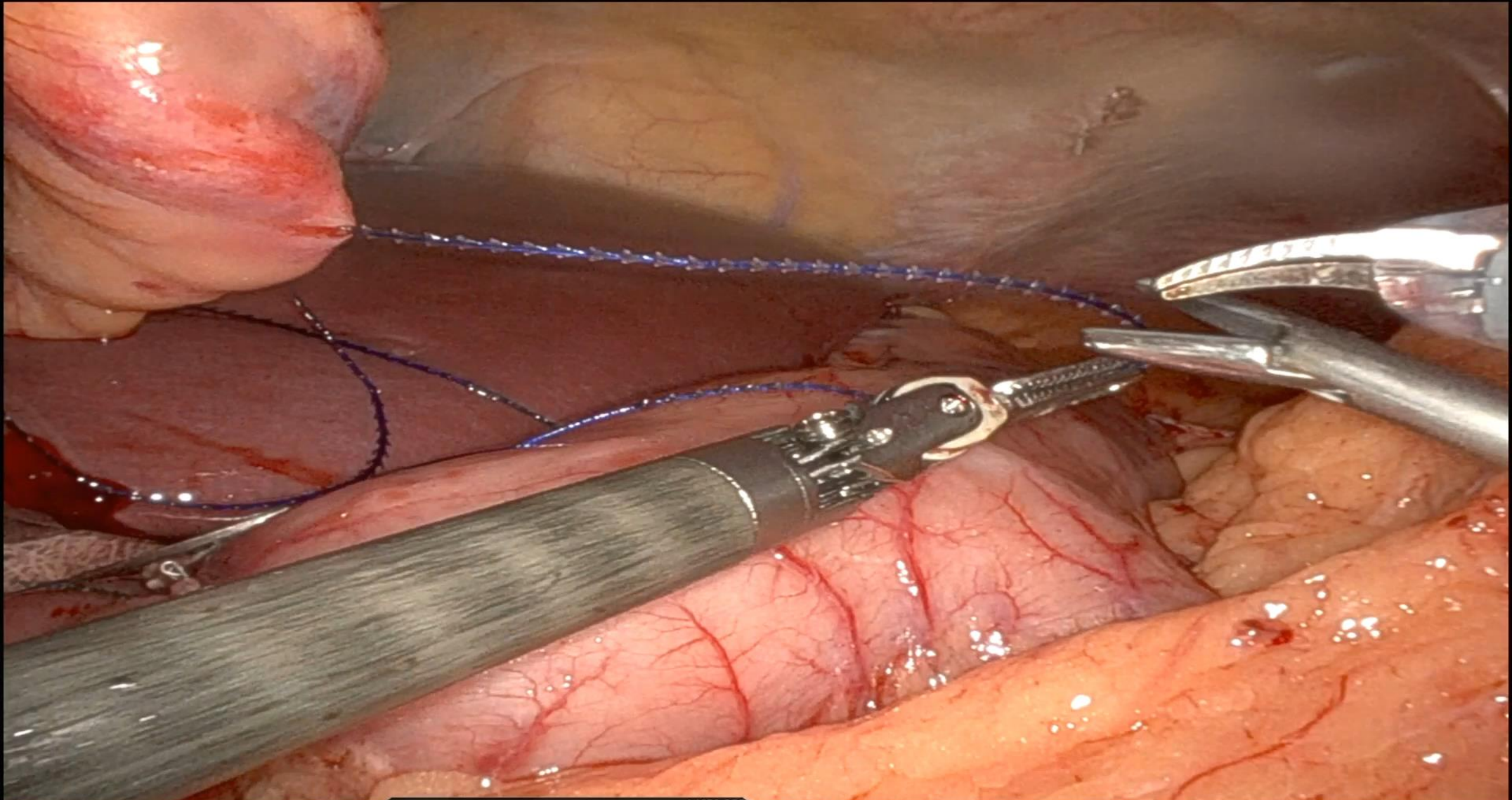
*Sachin S. Khuraja MD*  
BARIATRIC AND GENERAL SURGEON



*Sachin S. Kulkreja MD*  
BARIATRIC AND GENERAL SURGEON

1 FENESTRATED BIPOLAR FORCEPS L COAG	2 LASER OFF 12° REV 3° R 1x 30°	3 VESSEL SEALER EXTEND R CUT R SEAL	4 CADIERE FORCEPS
---	---------------------------------------	---	-------------------





1 FENESTRATED BIPOLAR FORCEPS COAG

2 12° REV 5° R 1x 30° LASER OFF

3 MONOPOLAR CURVED SCISSORS R CUT R COAG

4

Thank you!



**DFW**

BARIATRICS &  
GENERAL SURGERY

