

XXVIII IFSO World Congress

9-12 September 2025 | Santiago, Chile



Roux-en-Y Gastric Bypass and Sleeve Gastrectomy Risk-Adjusted Safety Profiles After Previous Fundoplication: A 499-Patient MBSAQIP Analysis

Pattharasai Kachornvitaya, MD, FRCST
King Chulalongkorn Memorial Hospital, Bangkok, Thailand
Research Scholar, Cleveland Clinic, Ohio, USA

IFSO 2025 Santiago

Combined Therapies, The Dawn of a New Era

ifso2025.org

Disclosure



**XXVIII IFSO
World Congress**

**9-12 September 2025
Santiago, Chile**

Nothing to Disclose.



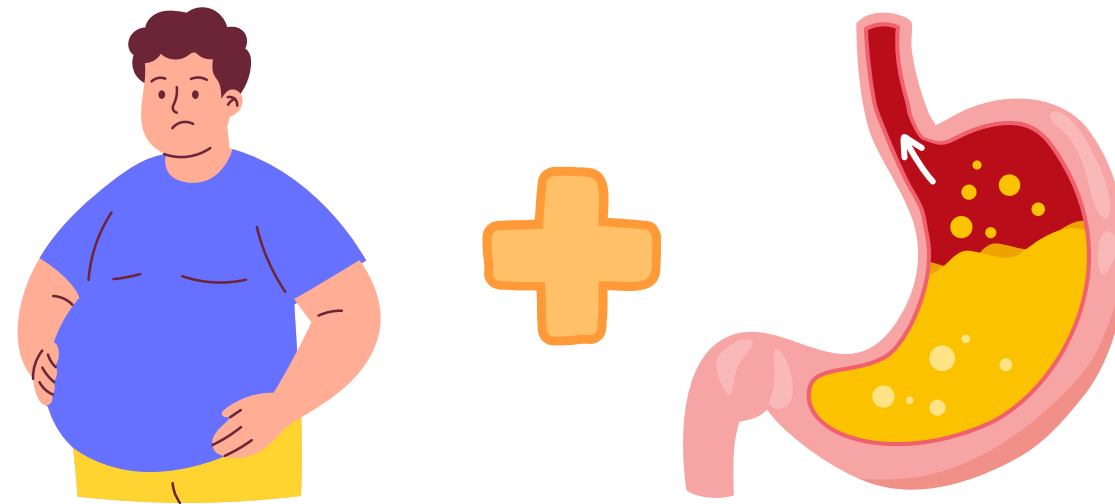


XXVIII IFSO
World Congress

9-12 September 2025
Santiago, Chile

Introduction

- **Obesity** and **GERD** are frequently coexist.
- Fundoplication is effective, but failure rates up to 30% in patients with obesity.
- Revisional options: Redo fundoplication, Bariatric surgery
- Evidence gap: safety outcomes of SG vs RYGB after prior fundoplication



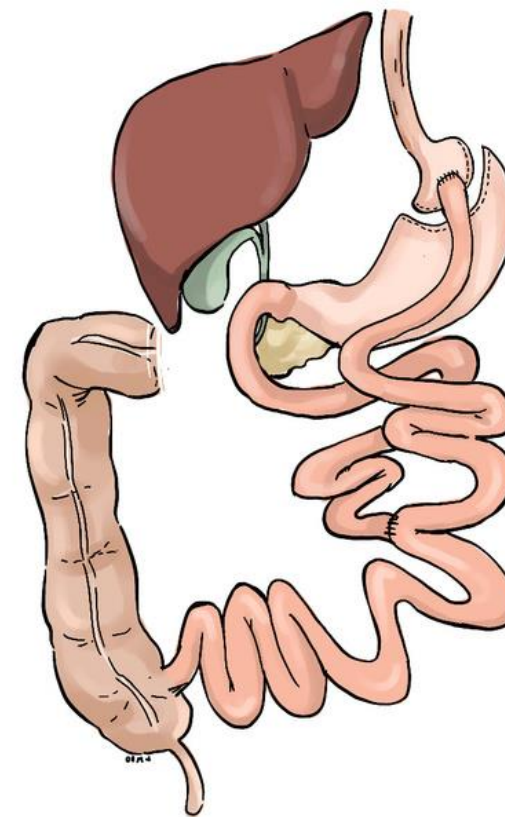
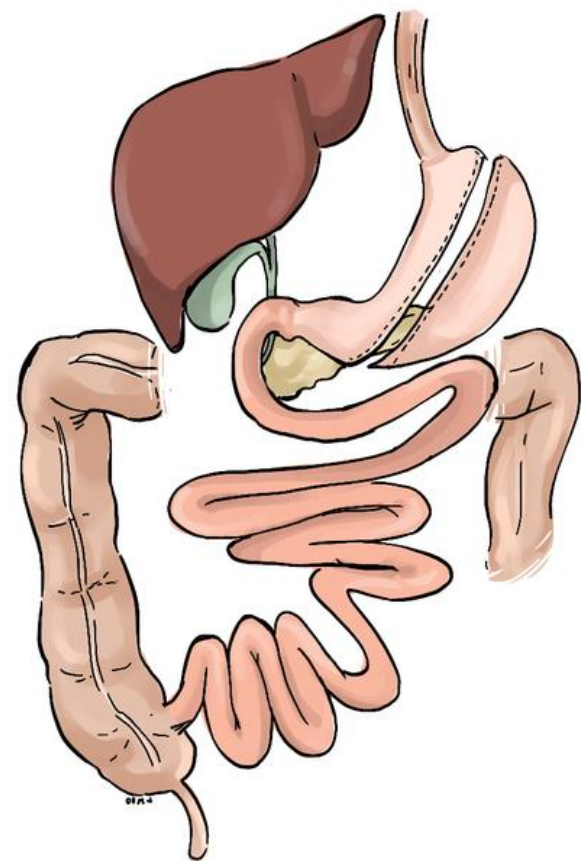


XXVIII IFSO
World Congress

9-12 September 2025
Santiago, Chile

Objectives

- Compare 30-day overall serious complication rates between SG and RYGB
- Identify predictors of adverse outcomes



Methods



- **Study Design**
 - Retrospective cohort analysis (MBSAQIP database 2022–2023)
- **Population**
 - Adults undergoing primary SG or RYGB with prior fundoplication were included.
- **Variables Collected**
 - Demographic data, Operative details, Outcomes: 30-day complications
- **Analysis** Univariate and Multivariate logistic regression

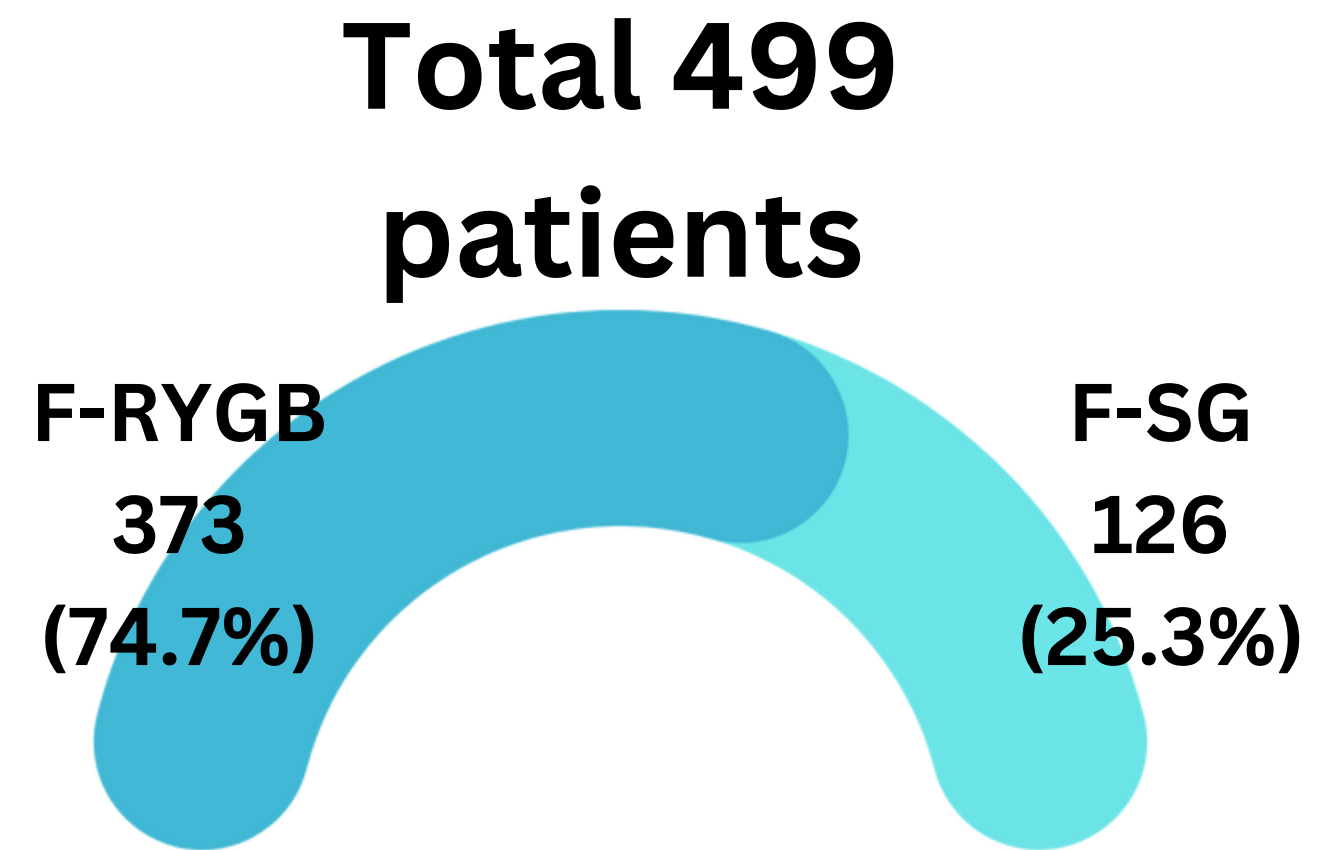
Results



XXVIII IFSO
World Congress

9-12 September 2025
Santiago, Chile

- **Patient cohort**
 - Mean BMI: higher in F-SG (42.4 vs 40.1, $p < 0.001$)
 - **GERD prevalence:** higher in F-RYGB (73.7% vs 47.6%, $p < 0.001$)
 - No different in other comorbidities.





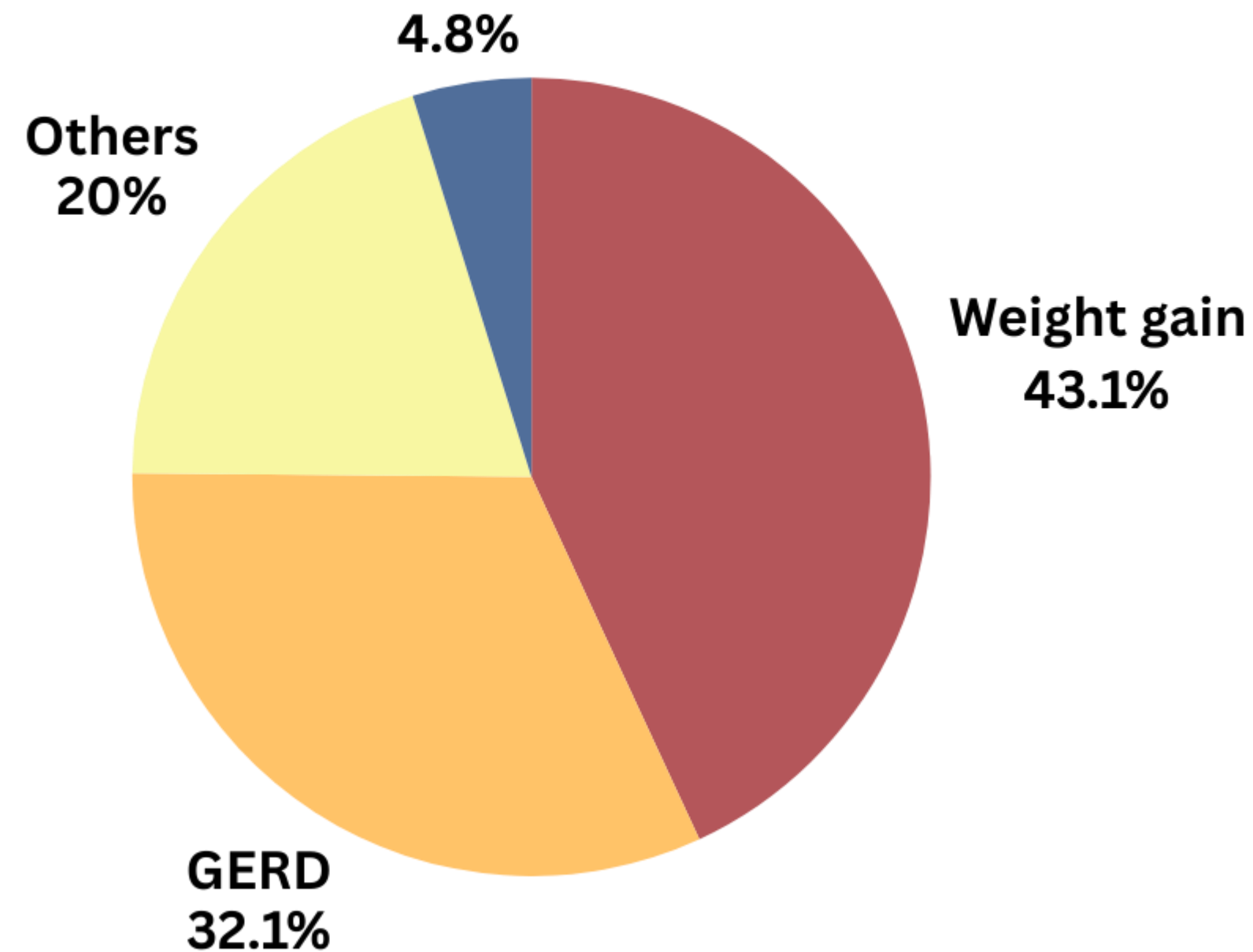
XXVIII IFSO
World Congress

9-12 September 2025
Santiago, Chile

Results

- **Indications**

Persistent associated medical problems



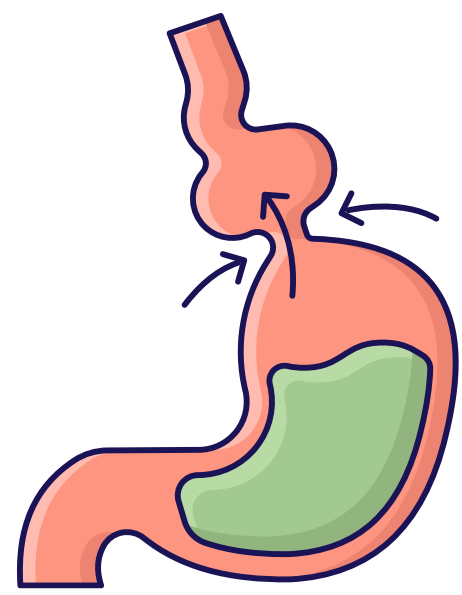


XXVIII IFSO
World Congress

9-12 September 2025
Santiago, Chile

Results

- **Perioperative Outcomes**



**Concomitant PEH repair
F-RYGB vs F-SG
(54% vs 26%, $p < 0.001$)**



**Operative time
F-RYGB vs F-SG
(200 vs 91 min,
 $p < 0.001$)**



**Length of stay
F-RYGB vs F-SG
(2.0 vs 1.3 days,
 $p = 0.001$)**





Results

- Healthcare utilizations

30-day outcomes	F-SG (n = 126)	F-RYGB (n = 373)	p-value
Readmission	4 (3.2)	42 (11.3)	0.007
Reoperation	0 (0)	15 (4)	0.022
Non-operative intervention	2 (1.6)	15 (4)	0.193





**XXVIII IFSO
World Congress**

9-12 September 2025
Santiago, Chile

Results

• 30-days Complications

Surgical complications	F-SG (n = 126)	F-RYGB (n = 373)	p-value
Leaks	1 (0.8)	4 (1.1)	0.786
Postoperative bleeding	0 (0)	9 (2.4)	0.078
Bowel obstruction	0 (0)	12 (3.2)	0.042

Surgical complications	F-SG (n = 126)	F-RYGB (n = 373)	p-value
Superficial SSI	0 (0)	5 (1.3)	0.191
Deep SSI	2 (1.6)	10 (2.7)	0.488
Wound Disruption	0 (0)	1 (0.3)	0.561
Sepsis	0 (0)	2 (0.5)	0.41





XXVIII IFSO
World Congress

9-12 September 2025
Santiago, Chile

Results

• 30-days Complications

Medical complications	F-SG (n = 126)	F-RYGB (n = 373)	p-value
Cardiac events	0 (0)	4 (1.1)	0.243
Pneumonia	1 (0.8)	4 (1.1)	0.786
Unplanned Intubation	0 (0)	3 (0.8)	0.313
VTE	0 (0)	6 (1.6)	0.152
Acute kidney injury	1 (0.8)	0 (0)	0.085

Overall Serious Complications



F-SG: 5 (4%)
F-RYGB: 36 (9.6%)
p = 0.045

Mortality



F-SG: 0
F-RYGB: 2 (0.5%)





**XXVIII IFSO
World Congress**
9-12 September 2025
Santiago, Chile

Multivariate logistic regression	Adjusted odds ratio	95% CI	p-value
Concomitant paraesophageal hernia repair	0.86	0.43 – 1.73	0.679
Higher BMI (per 5 kg/m²)	1.18	0.92 – 1.52	0.188
Older age (per 10 years)	0.84	0.57 – 1.21	0.342
Female	0.67	0.28 – 1.63	0.376
Black	1.14	0.41 – 3.23	0.799
Non-insulin dependent	0.84	0.34 – 2.06	0.701
Insulin dependent	1.23	0.38 – 4.02	0.728
Hypertension	1.07	0.52 – 2.24	0.847
GERD	2.06	0.87 – 4.86	0.098
History of VTE	1.85	0.56 – 6.17	0.315
F-RYGB vs F-SG	2.03	0.68 – 6.09	0.207
Longer operative time	1	0.99 – 1.00	0.359



Results



XXVIII IFSO
World Congress

9-12 September 2025
Santiago, Chile

- **Multivariate logistic regression analysis**
 - Procedure type not an independent predictor of serious complications
 - Other factors are not significant predictors.





XXVIII IFSO
World Congress

9-12 September 2025
Santiago, Chile

Limitations

- Limited to cases documented after 2022, when fundoplication status was first collected
- Only 30-day outcomes available
- Severity of GERD symptoms not captured
- Type of prior fundoplication, takedown status, surgical technique, and surgeon experience unavailable
- Institutional protocols and decision-making not standardized



Conclusions



XXVIII IFSO
World Congress

9-12 September 2025
Santiago, Chile

- Both SG and RYGB are viable options after prior fundoplication
- Unadjusted: higher serious complications in RYGB
- Adjusted: no difference → patient selection is key
- **RYGB remains the favored option for patients with obesity and persistent GERD**



XXVIII IFSO World Congress

9-12 September 2025 | Santiago, Chile



Thank You

IFSO 2025 Santiago

Combined Therapies, The Dawn of a New Era

ifso2025.org