



#IFSO2025

Antonio Torres



IFSO2025.ORG





“Single Anastomosis Duodeno-Ileal Bypass with Sleeve: (SADI-S)”

Antonio J. Torres MD, PhD, FACS, FASMBS
Professor of Surgery

Hospital Clínico San Carlos. Universidad Complutense de Madrid

President IFSO 2011-2012

Chairman IFSO’s Board of Trustees 2015-2019



Disclosures

Lectures & Consultant for

Johnson & Johnson

Medtronic

GT Metabolic

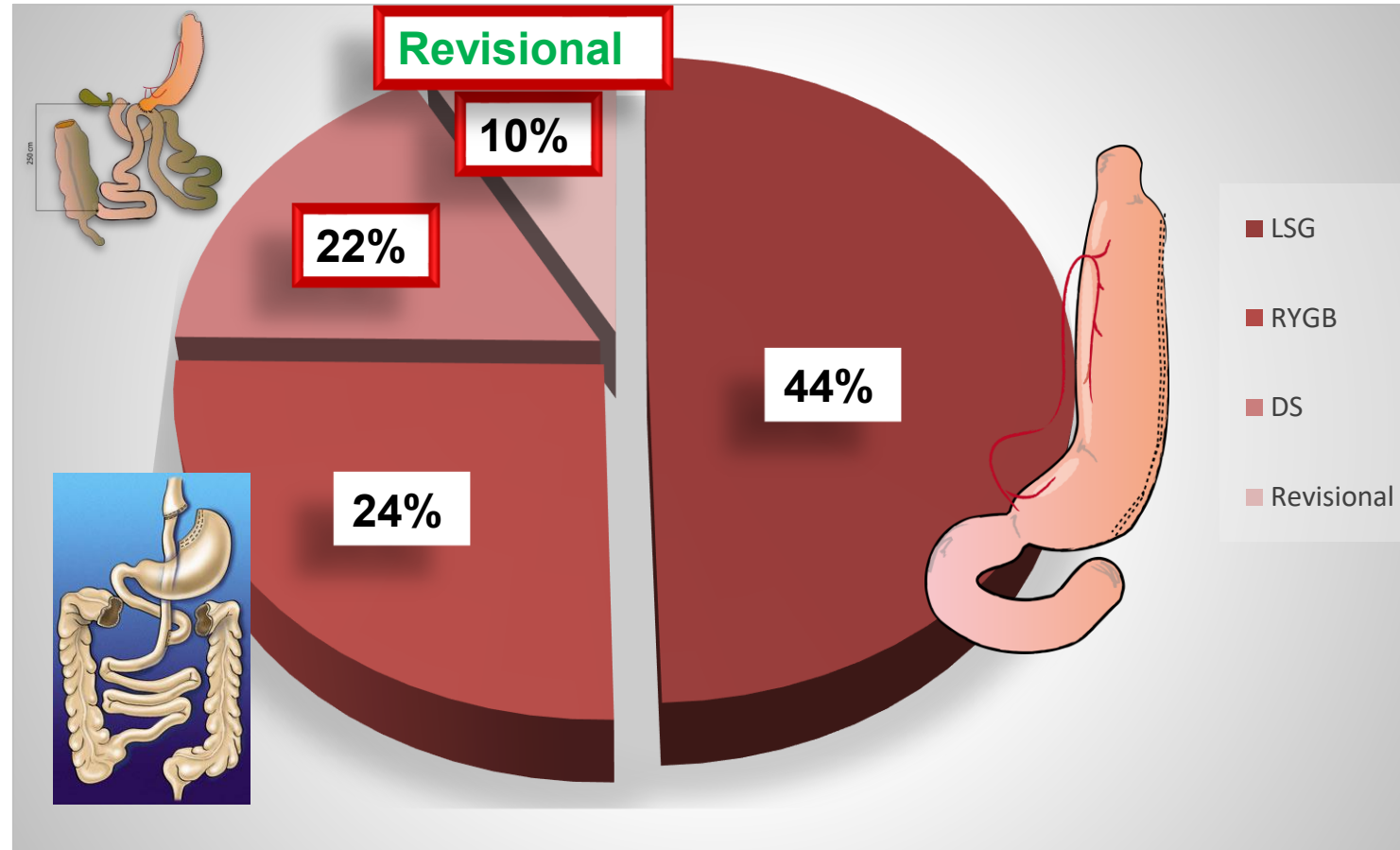
Meril

Gore Medical



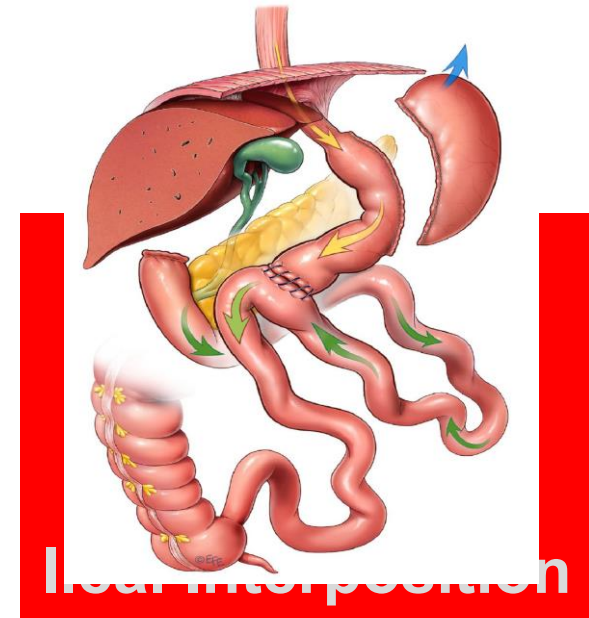
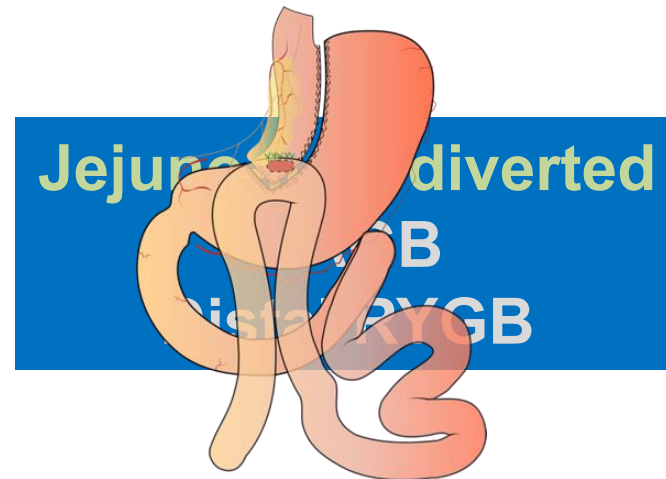
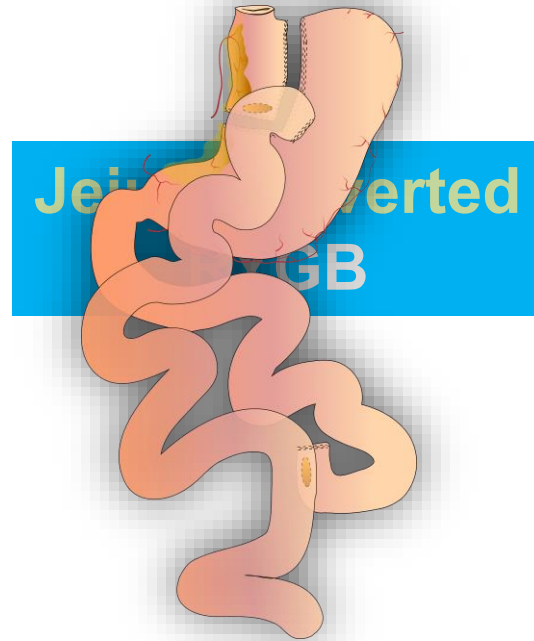
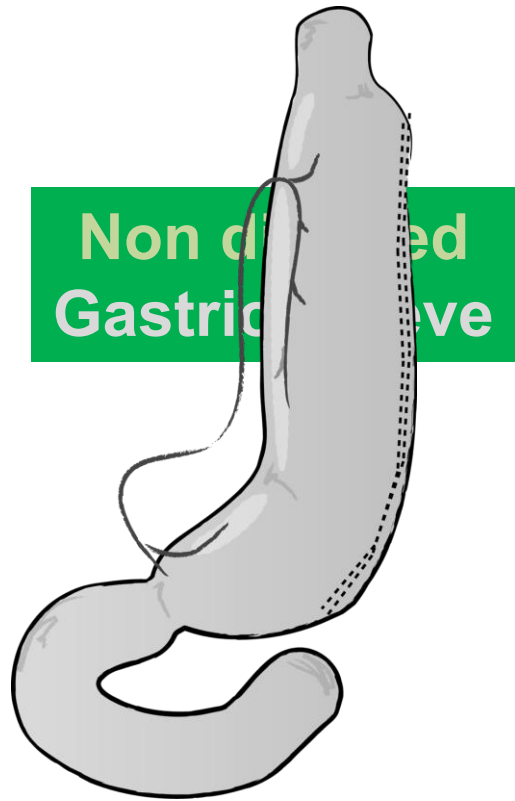


Obesity Surgery at Hospital Clínico San Carlos. Complutense University of Madrid



Surgical Procedures

Bariatric/Metabolic Surgery: Surgical Alternatives



Bariatric/Metabolic Surgery:

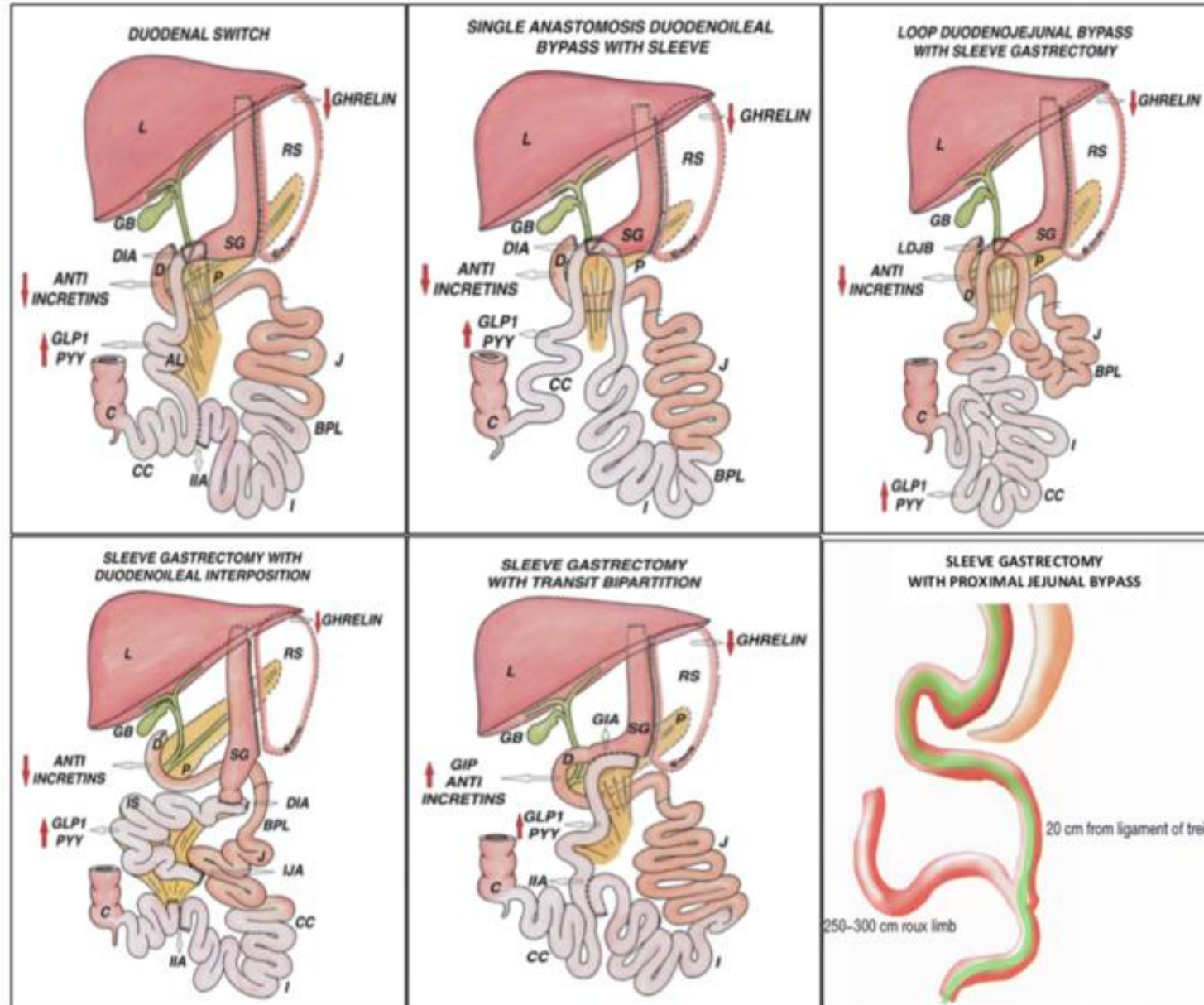
Surgical Approaches

• PYLORUS PRESERVATION

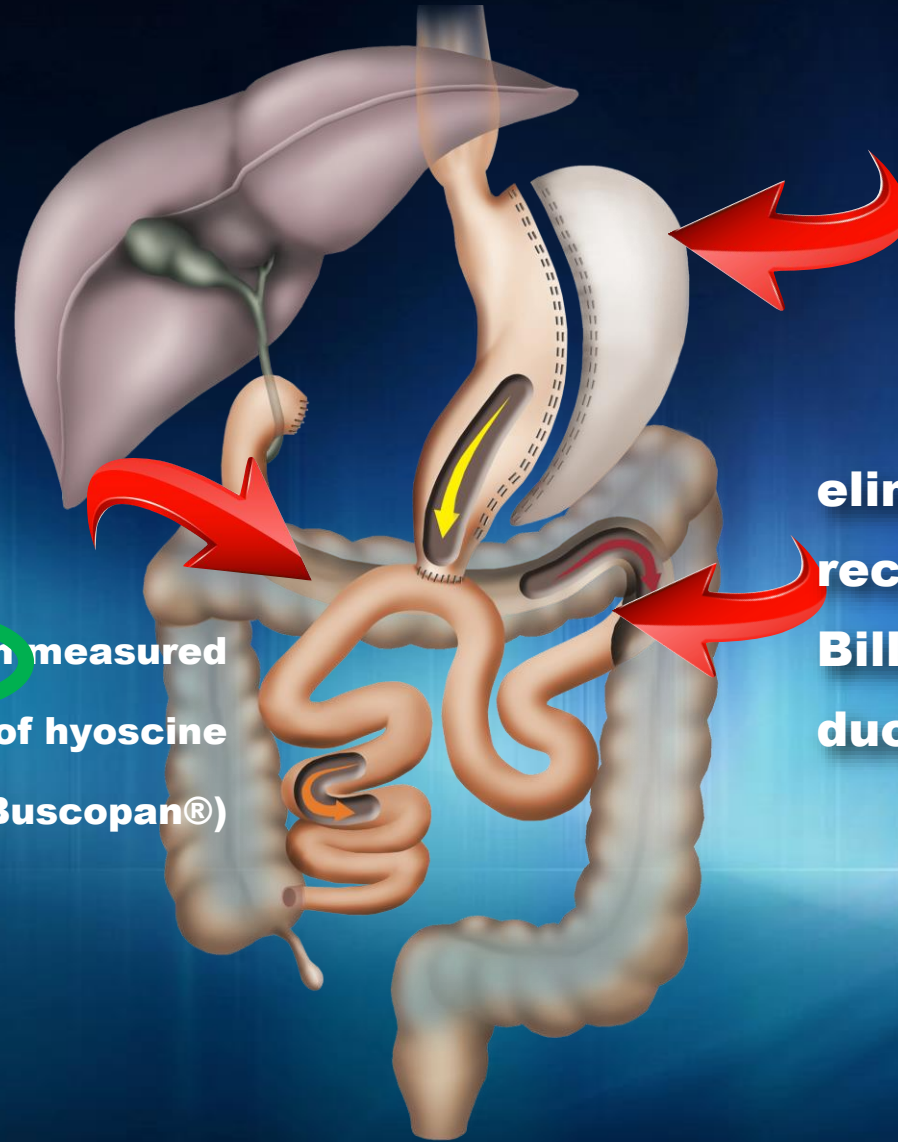
• ILEAL RESECTION

MORE
PHYSIOLOGICAL
SURGERY

“Ileal surgical Procedures: SLEEVE PLUS PROCEDURES”



SADI-S

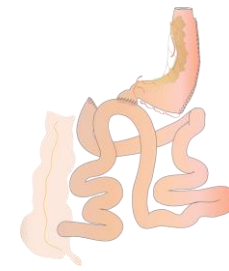
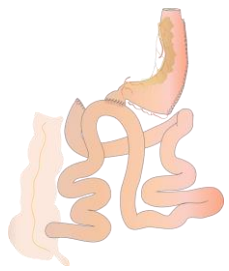


**sleeve gastric resection
over a 54F bougie**

**eliminates the Roux- en-Y
reconstruction and includes
Billroth II-type one-loop
duodenoileostomy instead**

the ileocolic junction is identified and **250 cm** measured
proximally (formerly **200 cm**), after infusion of hyoscine
butylbromide (Buscopan®)

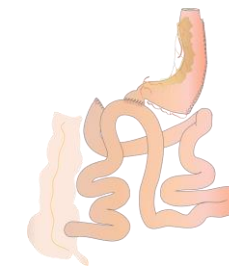
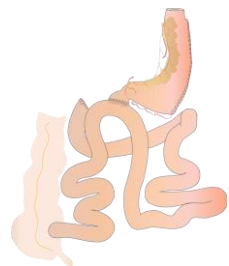




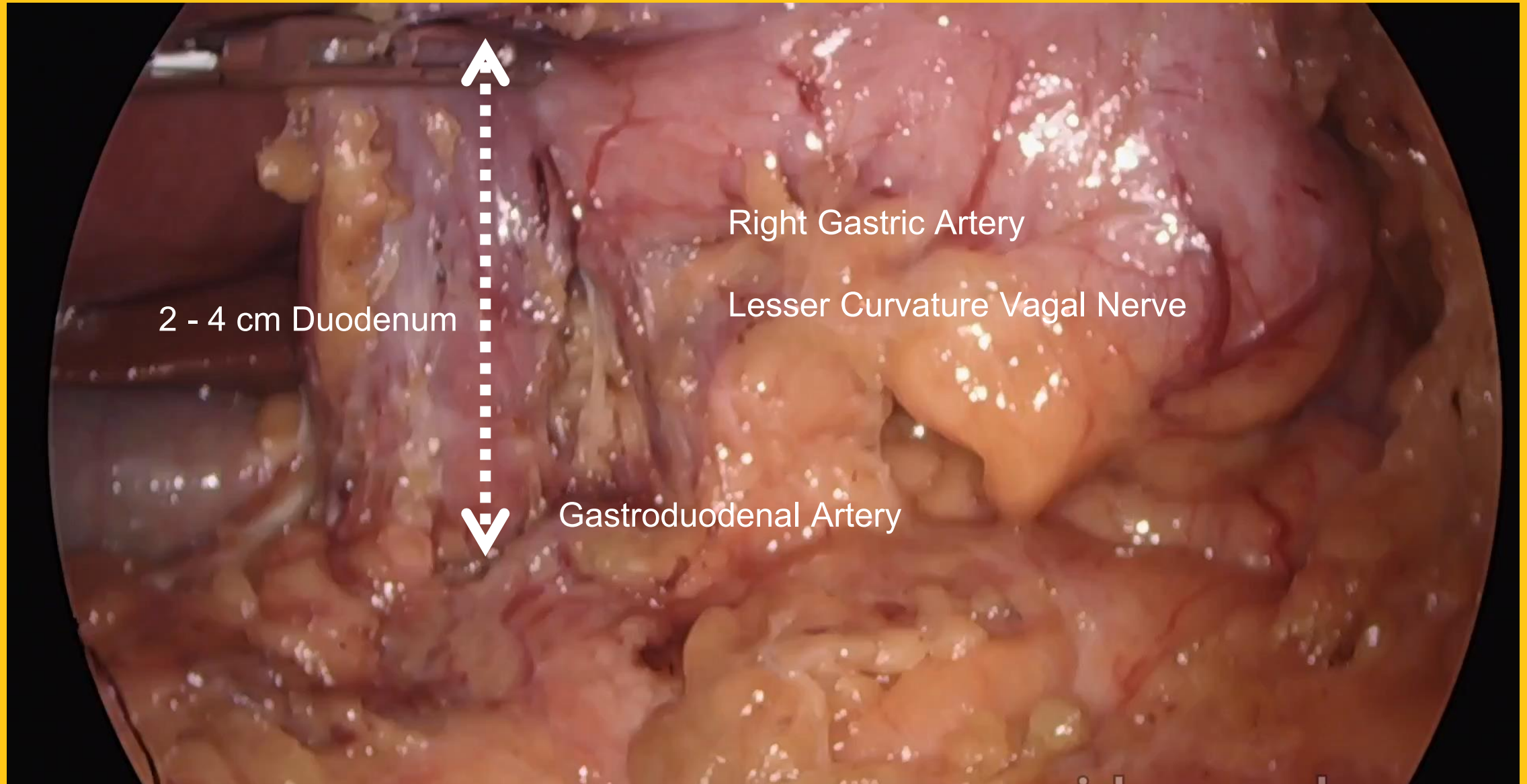
Single-Anastomosis Duodeno-Ileal
bypass with Sleeve gastrectomy:

SADI-S

**A modified biliopancreatic
diversion**



Blood Supply and Vagus Nerve Preservation



SADIS

- PRIMARY Procedure
- Revisional Procedure



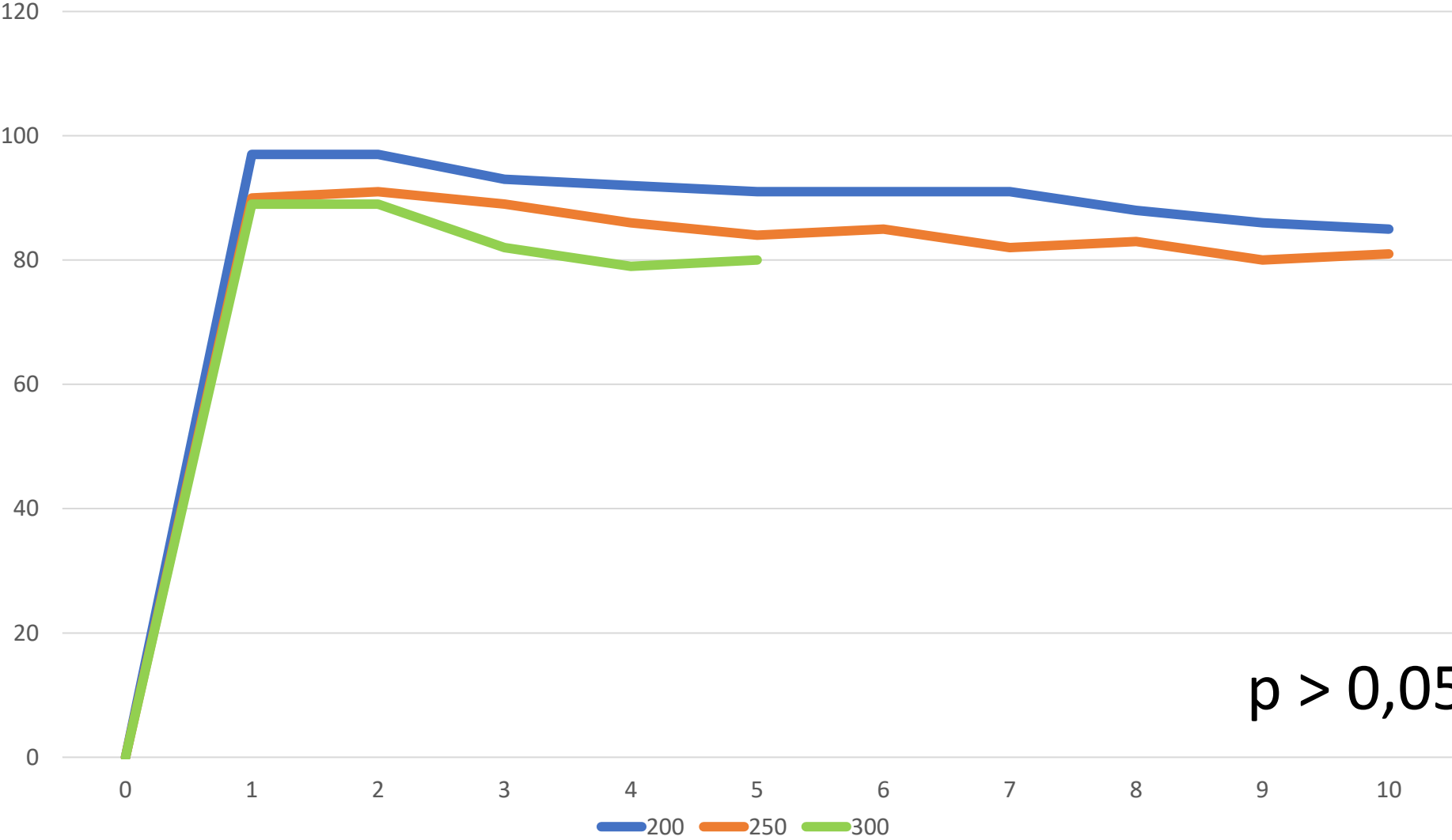
Long-Term Results of Single-Anastomosis Duodeno-ileal Bypass with Sleeve Gastrectomy (SADI-S)

Andrés Sánchez-Pernaute¹  · Miguel Ángel Rubio Herrera² · Natalia Pérez Ferré² · Carlos Sáez Rodríguez¹ · Clara Marcuello² · Clara Pañella¹ · Leyre Lopez Antoñanzas¹ · Antonio Torres¹ · Elia Pérez-Aguirre¹

Received: 12 October 2021 / Revised: 29 December 2021 / Accepted: 30 December 2021

© The Author(s) 2022

The common limb & weight loss



SADI-S Metabolic

May 2007 - July 2017

N = 260

Diabetics 131 (50%)

Mean age: 51 años (27 - 71)

Gender: 67 Female, 64 Male

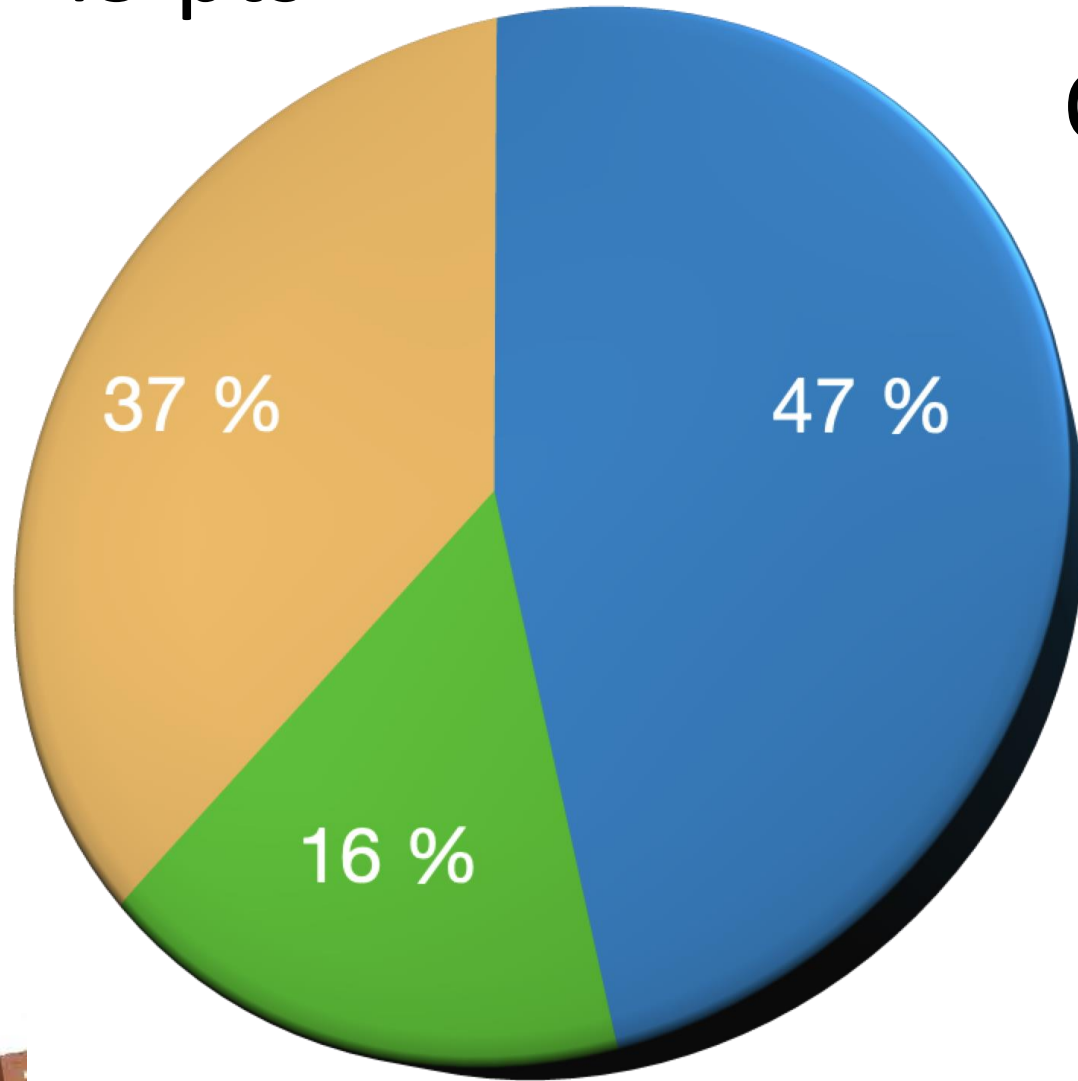
Preoperative weight: 124 kg (86 - 216)

Preoperative BMI: 45,3 kg/m² (34 - 71,5)



Insulin – 49 pts

Oral – 61 pts



No treatment – 21 pts

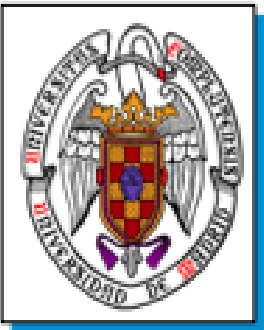


Glycemia 161,8 (88 - 408)

HbA1c 7,4% (5,4 - 14)

C-peptide 3,2 (0,4 - 12)

HOMA-IR 11,4 (0,6 - 72)



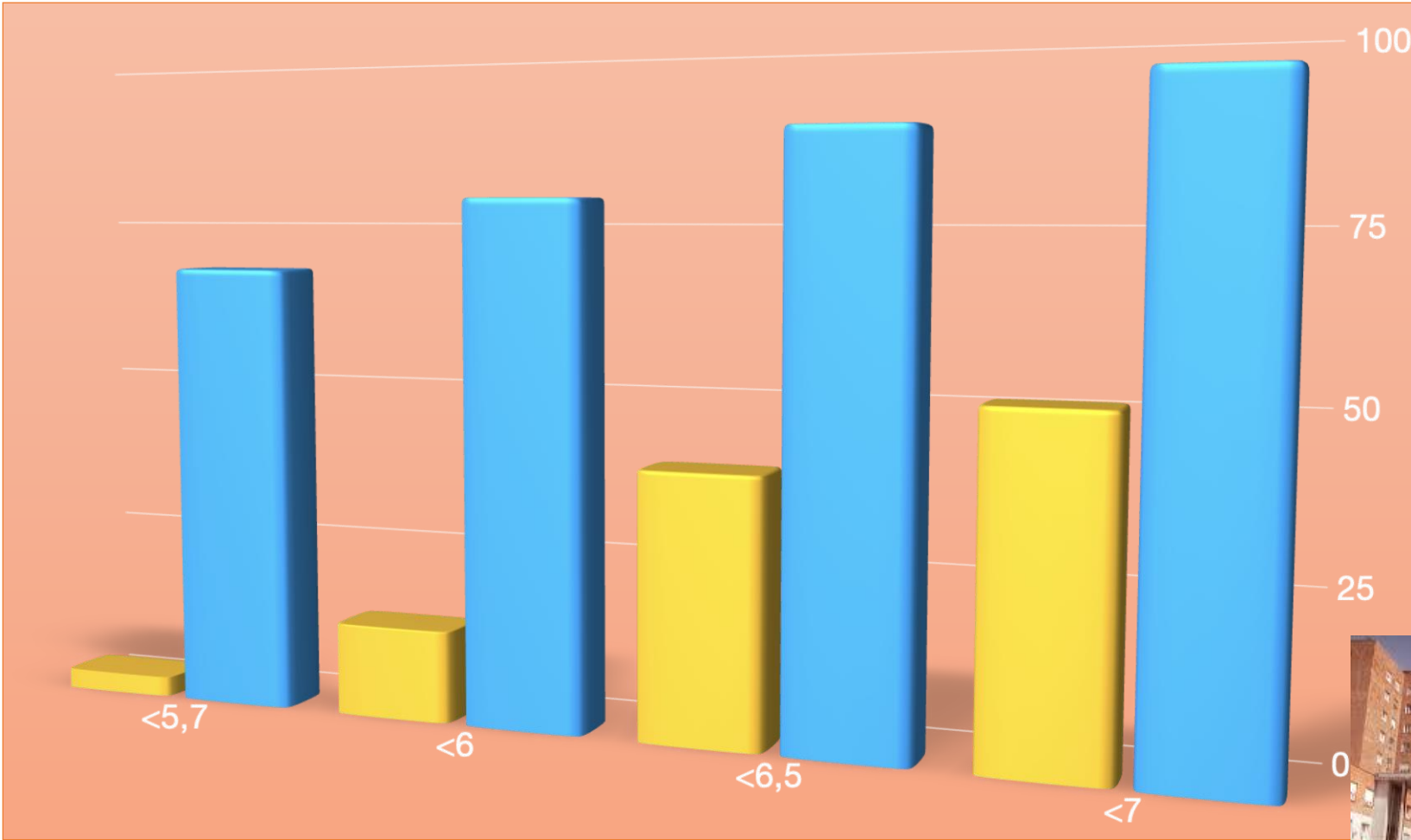
HbA1c

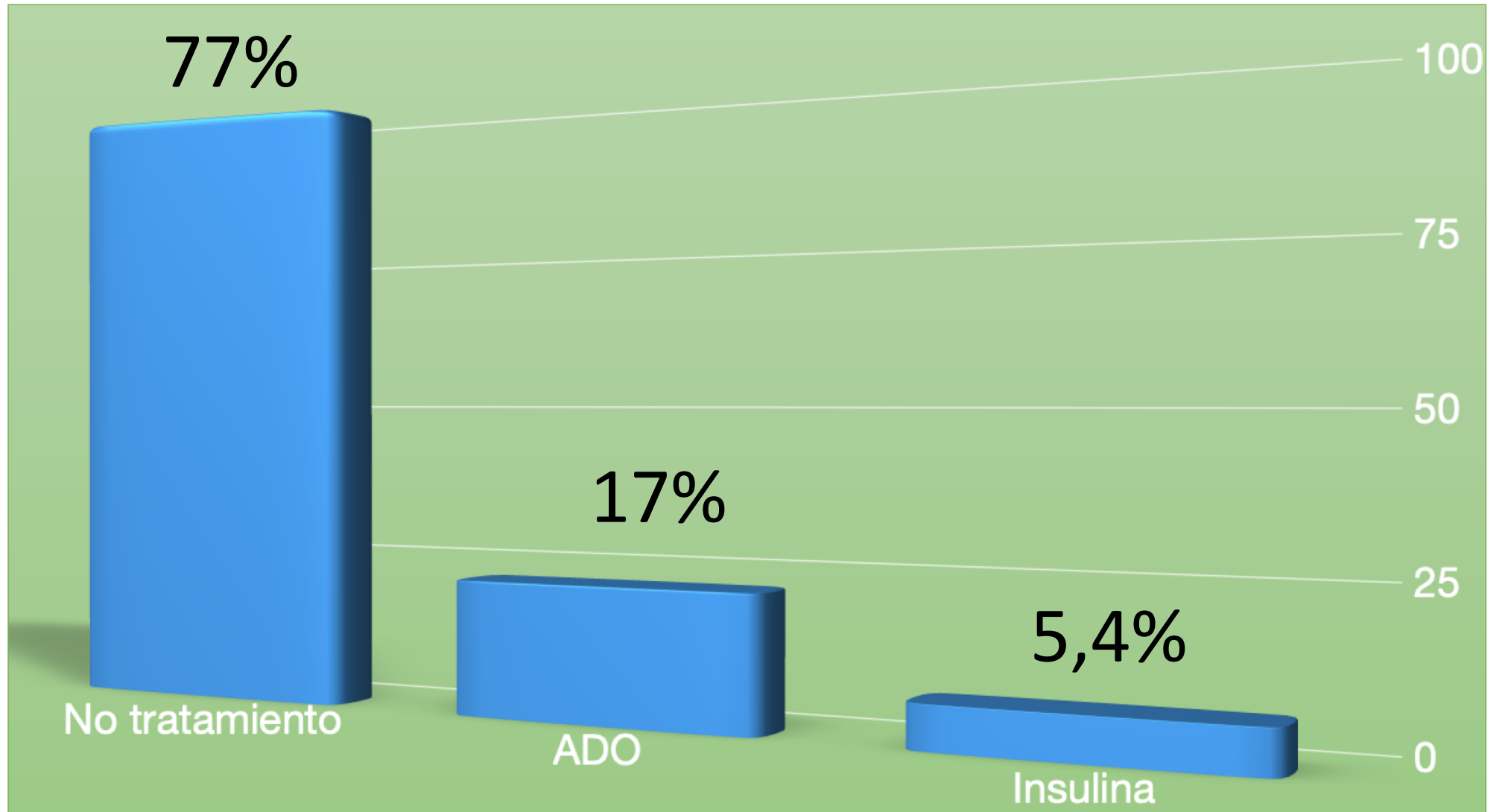


Pre



Post





No tratamiento

ADO

Insulina

No

Oral

Insulin





Obesity Surgery (2022) 32:1049–1063

<https://doi.org/10.1007/s11695-021-05824-w>



ORIGINAL CONTRIBUTIONS



Evaluation of Metabolic Outcomes Following SADI-S: a Systematic Review and Meta-analysis







Kevin Verhoeff¹ · Valentin Mocanu¹ · Aiden Zalasky² · Jerry Dang¹ · Janice Y. Kung³ · Noah J. Switzer¹ · Daniel W. Birch⁴ · Shahzeer Karmali⁴

Received: 22 July 2021 / Revised: 13 November 2021 / Accepted: 2 December 2021 / Published online: 10 January 2022

© The Author(s), under exclusive licence to Springer Science+Business Media, LLC, part of Springer Nature 2021



Title: Evaluation of metabolic outcomes following SADI-S: A systematic review and meta-analysis

METHODS	RESULTS	CONCLUSIONS
<p>2285 Studies Reviewed</p>  <p>Systematic Review and Meta Analysis Following PRISMA and MOOSE Guidelines</p>	<p>3319 patients 1704 (51.3%) undergoing SADI-S.</p>  <p>SADI-S</p> <ul style="list-style-type: none">- Shorter operative duration (MD -36.74, $p < 0.001$)- Greater DM remission than LRYGB (OR 4.42, $p = 0.04$).- Vitamin A, D, E, K, and B12 deficiency in 12.6%, 32.1%, 0.0%, 0.5%, and 3.4% of patients <p>SADI-S Patients</p> <ul style="list-style-type: none">- Higher BMI and weight- More diabetes and dyslipidemia	 <p>SADI-S improved diabetes compared to LRYGB</p>  <p>comparable post-operative risks to OAGB and LRYGB</p>  <p>Faster Procedure.</p>  <p>Fewer malabsorptive complications than DS</p>



Kevin Verhoeff, Valentin Mocanu, Aiden Zalasky, Jerry Dang, Janice Y. Kung, Noah J. Switzer, Daniel W. Birch, Shahzeer Karmali



SADIS

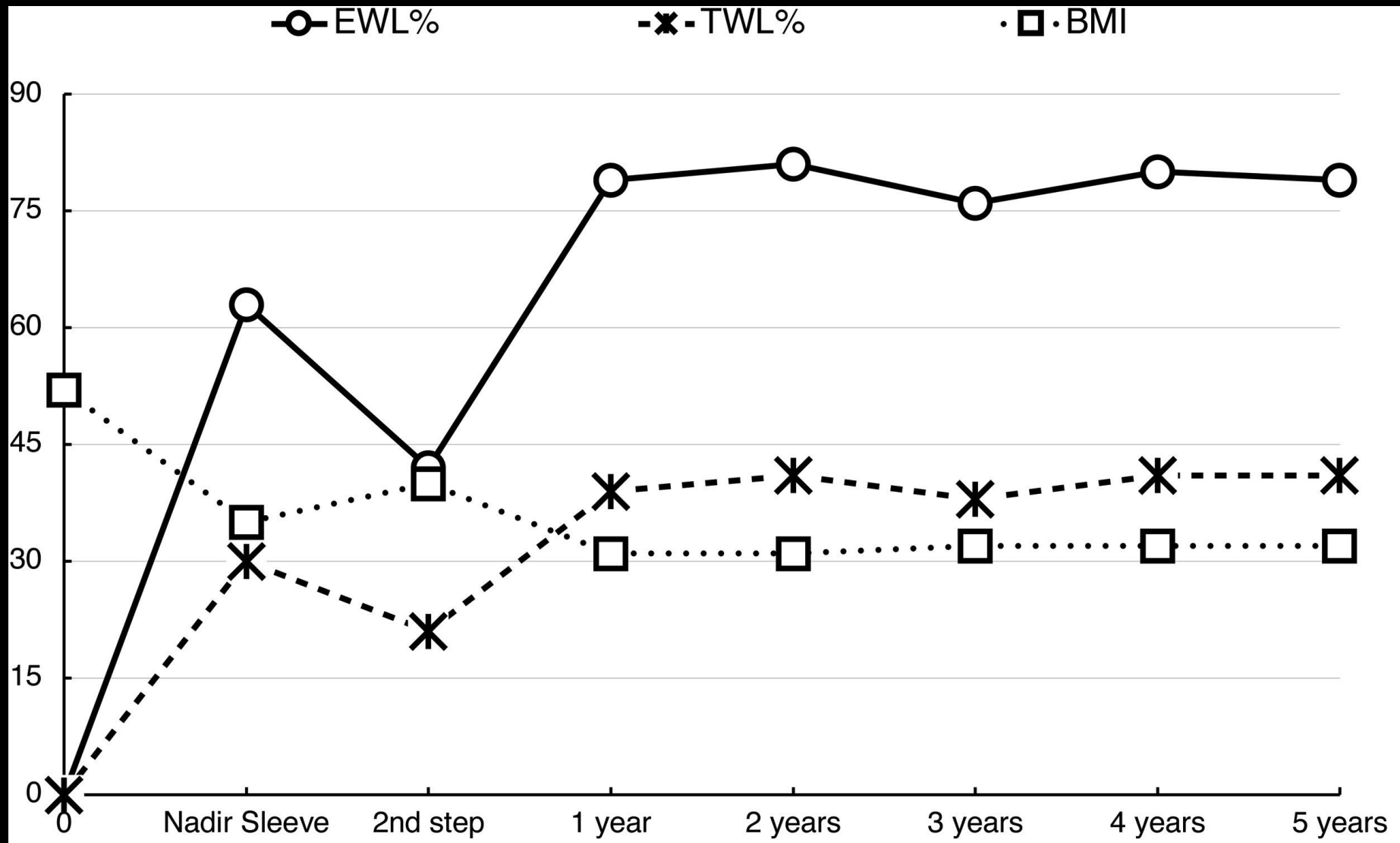
- Primary Procedure
- REVISIONAL Procedure

Single-anastomosis duodeno-ileal bypass as a revisional or second-step operation after sleeve gastrectomy

Andrés Sánchez-Pernaute, MD, PhD, Miguel Ángel Rubio, MD, PhD, Natalia Pérez, MD, PhD, Clara Marcuello, MD, PhD, Antonio Torres, Prof., MD, PhD, Elia Pérez-Aguirre, MD, PhD

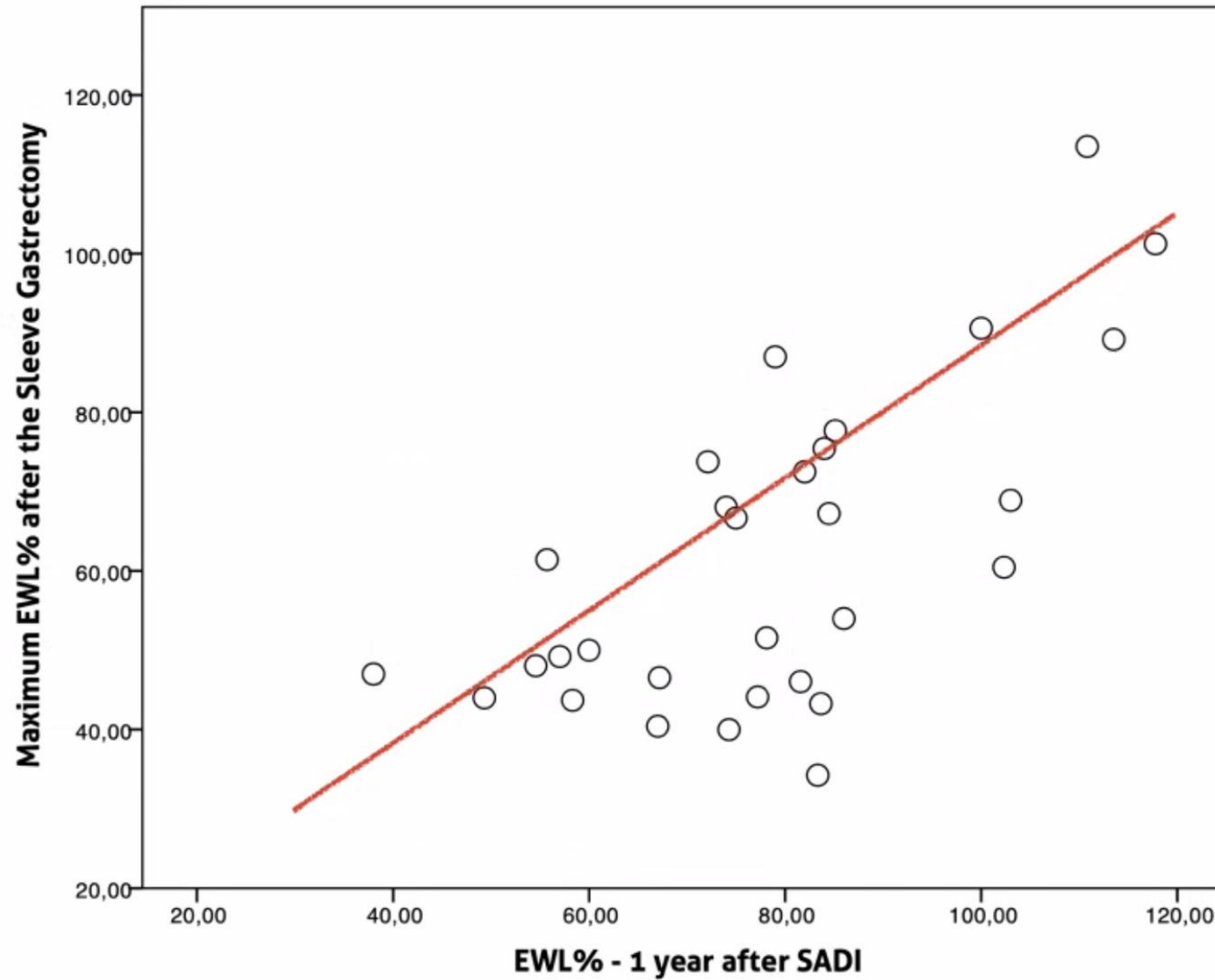
Surgery for Obesity and Related Diseases

DOI: 10.1016/j.soard.2020.05.022



N° Followed	41	29	21	17	17
Total N°	42	39	30	24	22

Direct relationship between a better weight loss after the Sleeve and a better weight loss after SADI



Single Anastomosis Duodeno-Ileostomy with Sleeve Gastrectomy/Single Anastomosis Duodenal Switch (SADI-S/SADS) IFSO Position Statement—Update 2023

Guillermo Ponce de Leon-Ballesteros¹ · Gustavo Romero-Velez¹ · Kelvin Higa¹ · Jacques Himpens¹ · Mary O' Kane¹ · Antonio Torres¹ · Gerhard Prager¹ · Miguel F. Herrera¹

• Weight Loss

	TWL 1 año	TWL 2 años	TWL 3-4 años	TWL >5 años (11 series)	TWL 10 años (1 serie)
SADI-S Primary	26.3-51.5%	17.6-50.9%	29-57.1%	22.5-38%	34.4%
SADI-S Revisional	10.6-25%	18.8-35.3%	21.8-44.1%	15-41%	



XXVIII IFSO World Congress

9-12 September 2025
Santiago, Chile

THE LANCET

Randomized Controlled Trial > Lancet. 2025 Aug 23;406(10505):846-859.

doi: 10.1016/S0140-6736(25)01070-0.

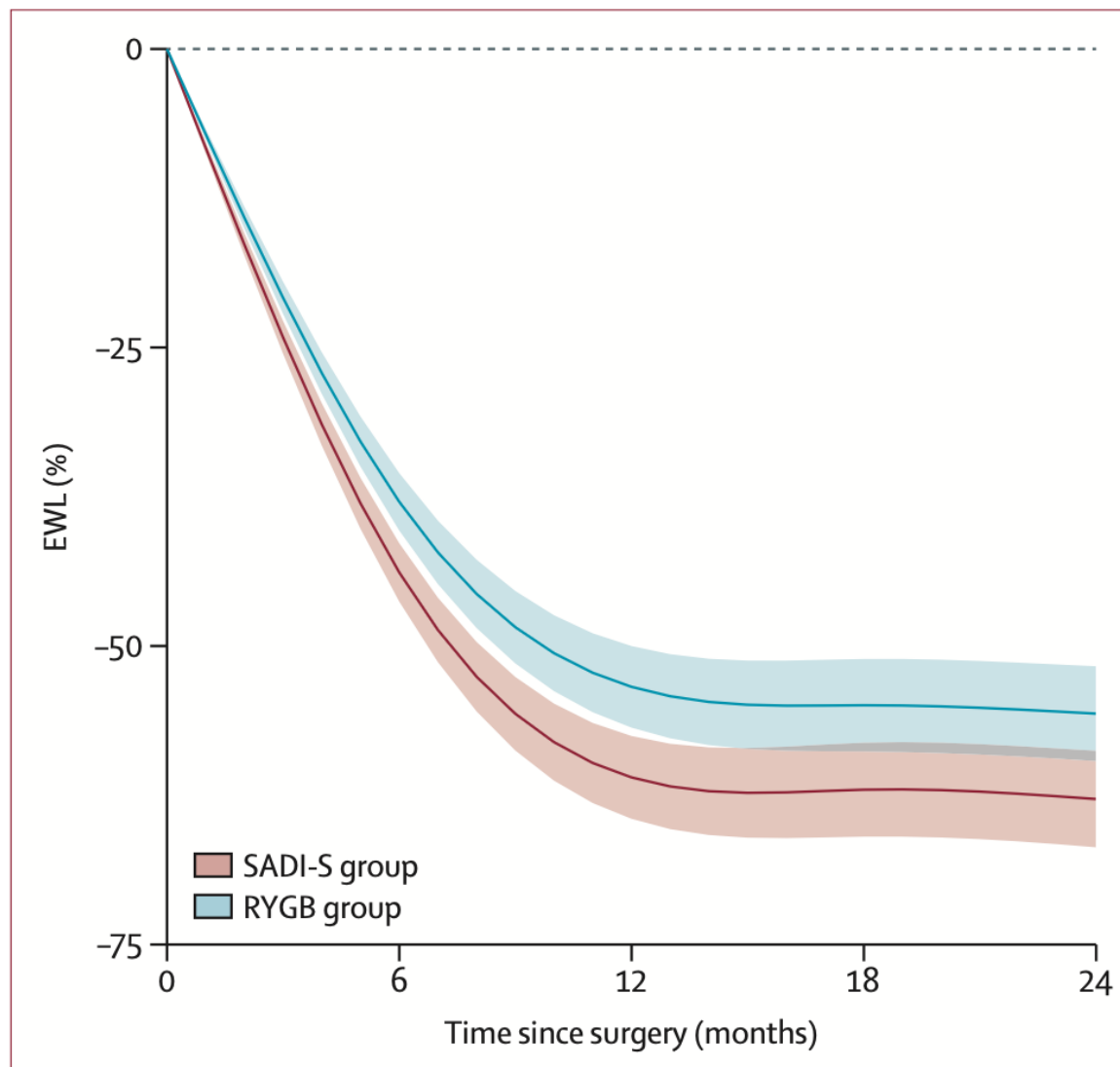
Efficacy and safety of single-anastomosis duodeno-ileal bypass with sleeve gastrectomy versus Roux-en-Y gastric bypass in France (SADISLEEVE): results of a randomised, open-label, superiority trial at 2 years of follow-up

Maud Robert ¹, Tigran Poghosyan ², Nicolas Romain-Scelle ³, Sebastien Czernichow ⁴,
Dominique Delaunay ⁵, Adrien Sterkers ⁶, Litavan Khamphommala ⁶, Andrea Lazzati ⁷,
Claire Blanchard ⁸, Robert Caiazzo ⁹, François Pattou ¹⁰, Emmanuel Disse ¹¹;
SADISLEEVE Collaborative Group



Efficacy and safety of single-anastomosis duodeno-ileal bypass with sleeve gastrectomy versus Roux-en-Y gastric bypass in France (SADISLEEVE): results of a randomised, open-label, superiority trial at 2 years of follow-up

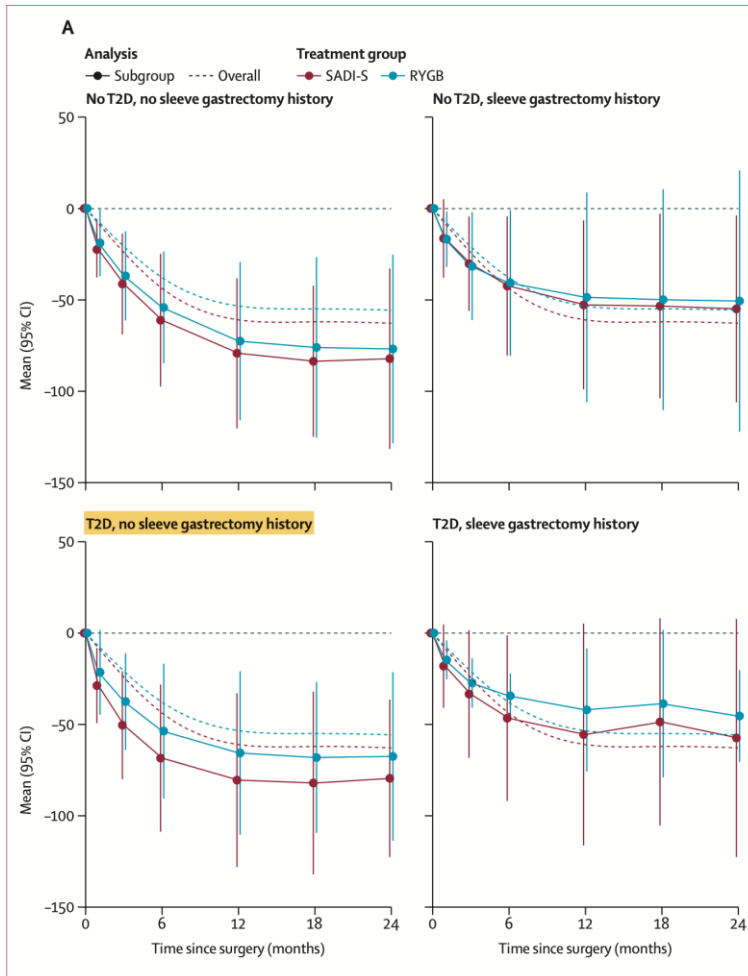
Maud Robert, Tigran Poghosyan, Nicolas Romain-Scelle, Sebastien Czernichow, Dominique Delaunay, Adrien Sterkers, Litavan Khamphommala, Andrea Lazzati, Claire Blanchard, Robert Caiazzo, François Pattou, Emmanuel Disse, and the SADISLEEVE Collaborative Group*





Efficacy and safety of single-anastomosis duodeno-ileal bypass with sleeve gastrectomy versus Roux-en-Y gastric bypass in France (SADISLEEVE): results of a randomised, open-label, superiority trial at 2 years of follow-up

Maud Robert, Tigran Poghosyan, Nicolas Romain-Scelle, Sebastien Czernichow, Dominique Delaunay, Adrien Sterkers, Litavan Khamphommala, Andrea Lazzati, Claire Blanchard, Robert Caiazzo, François Pattou, Emmanuel Disse, and the SADISLEEVE Collaborative Group*



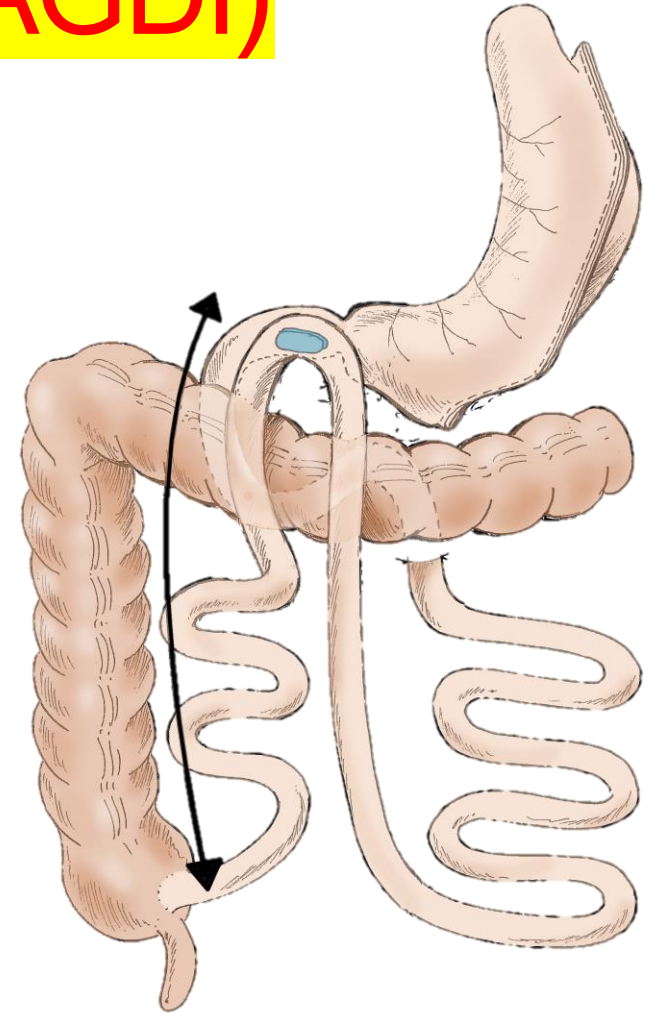
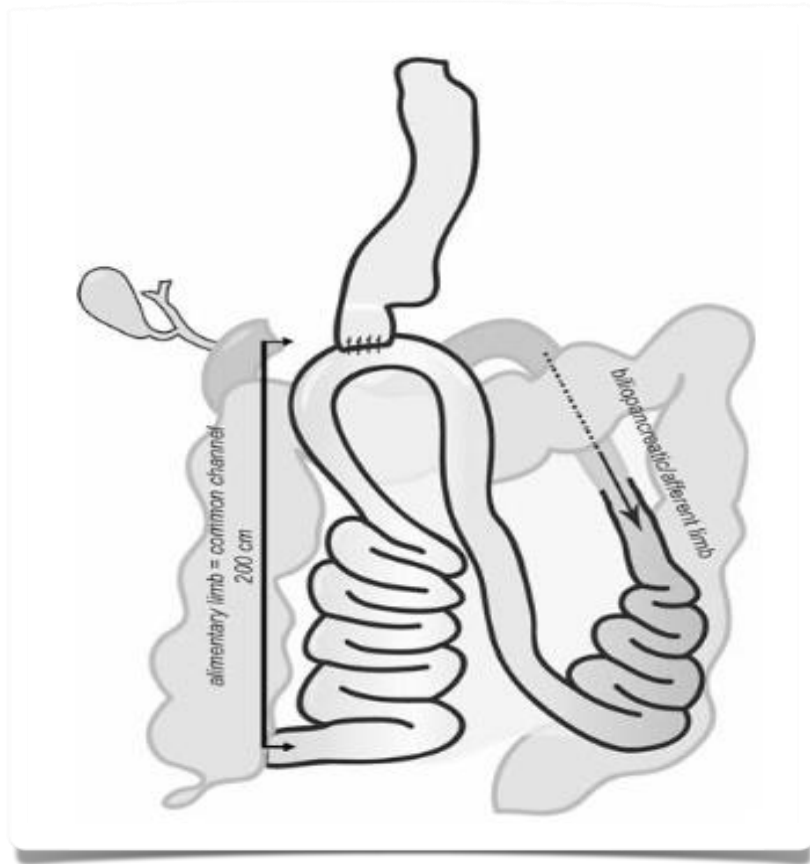
B

Estimate	Subgroup	Coefficient	CI	p value
Changes in % EWL in the SADI-S group compared with RYBG, function of stratification criteria	No sleeve history, no T2D	-4.56	-12.96 to 3.84	0.2861
	Sleeve history, no T2D	-5.69	-20.42 to 9.04	0.4479
	No sleeve history, T2D	-11.75	-22.71 to -0.79	0.0357
	Sleeve history, T2D	-6.70	-32.65 to 19.25	0.6118

SADIS



Duodenal-Bipartition
(MAGDI)



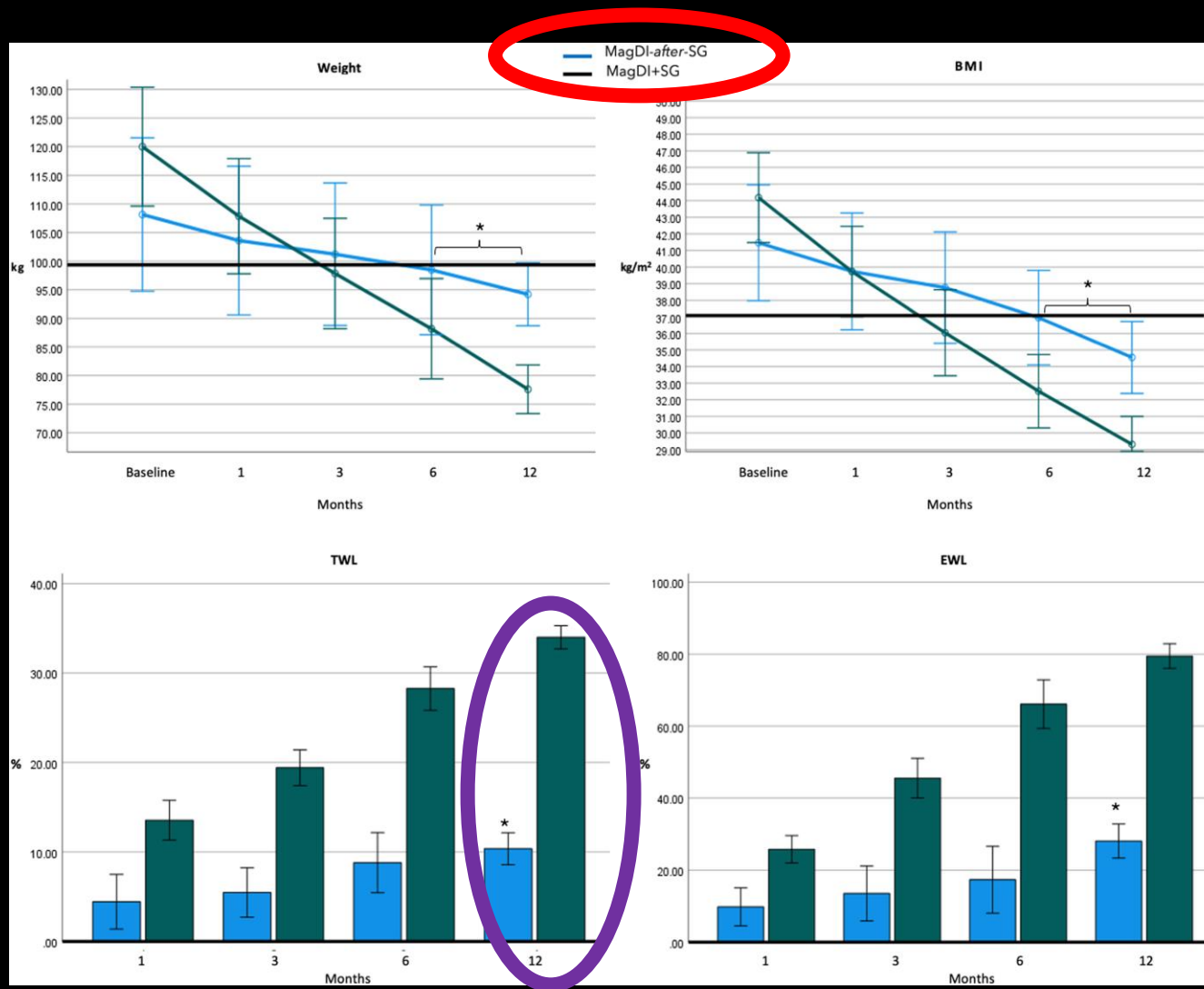
*Side-to-side magnetic duodeno-ileostomy in adults with severe obesity **with or without**
type 2 diabetes: early outcomes with **prior or concurrent sleeve gastrectomy***

Michel Gagner, M.D., Lamees Almutlaq, M.D., Guy-Bernard Cadere, M.D., Ph.D., Antonio J. Torres, M.D., Ph.D., Andres Sanchez-Pernaute, M.D., Ph.D., Jane N. Buchwald, B.A., David Abuladze, M.D.

Surgery for Obesity and Related Diseases
Volume 20 Issue 4 Pages 341-352 (April 2024)
DOI: 10.1016/j.soard.2023.10.018

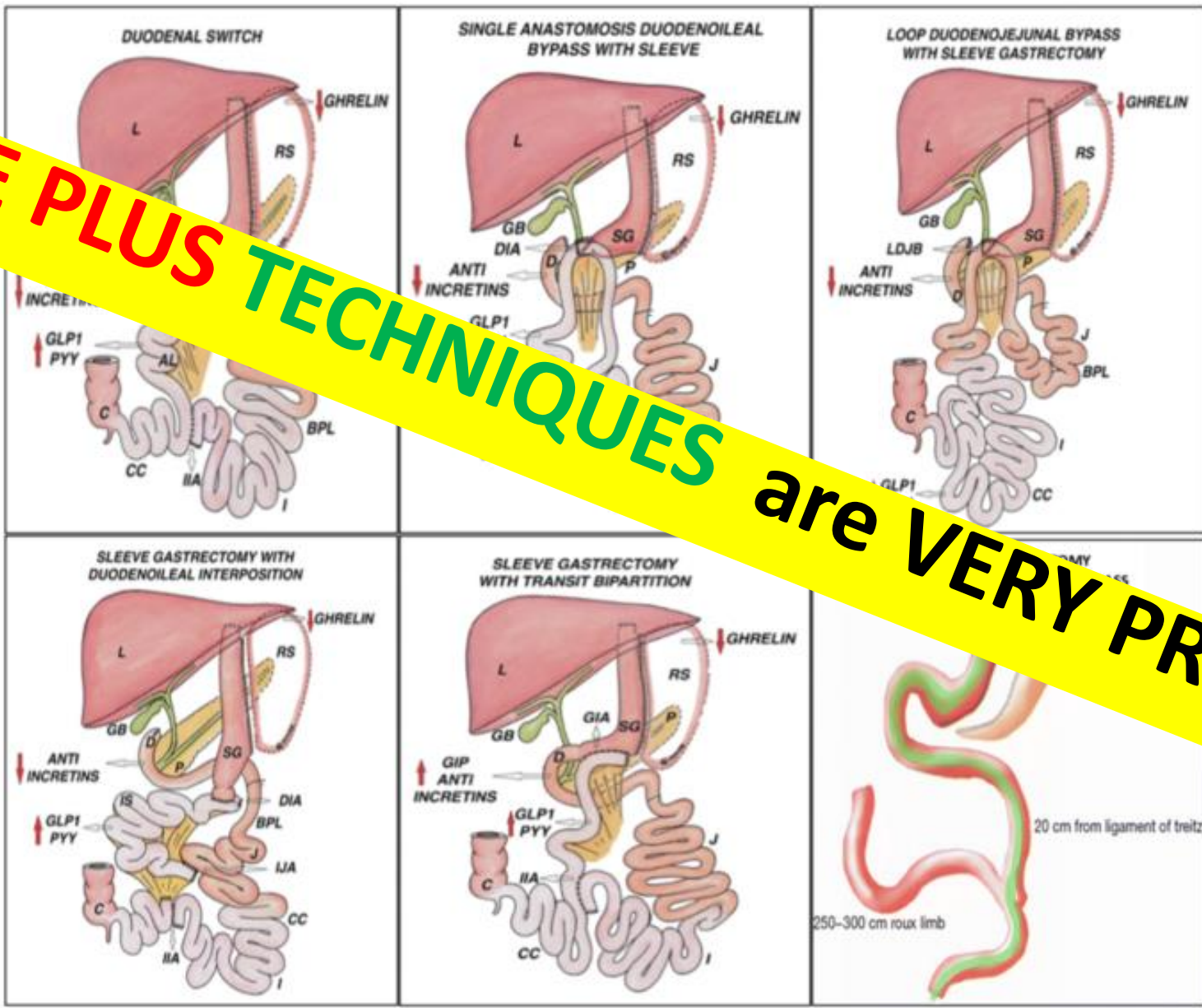


Fig. 4



"Ileal surgical Procedures: SLEEVE PLUS PROCEDURES"

"SLEEVE PLUS TECHNIQUES are VERY PROMISING"





**14th Congress of the International Federation
for the Surgery of Obesity & Metabolic Disorders
European Chapter (IFSO-EC)**

6 - 9 May 2026 | Málaga, Spain

See you in Málaga!



